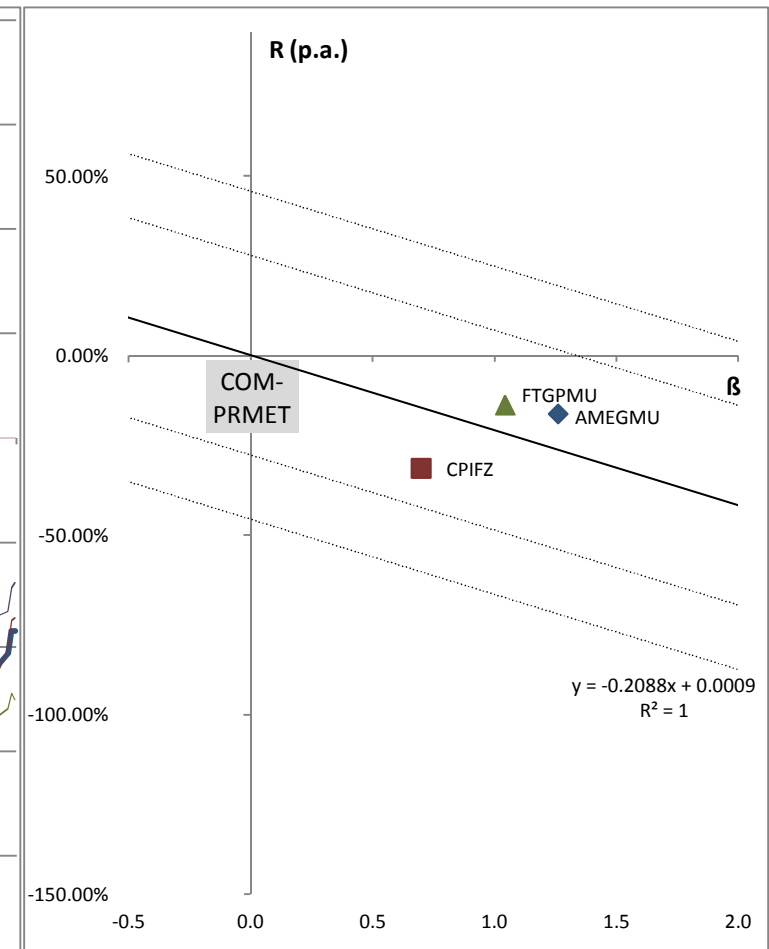
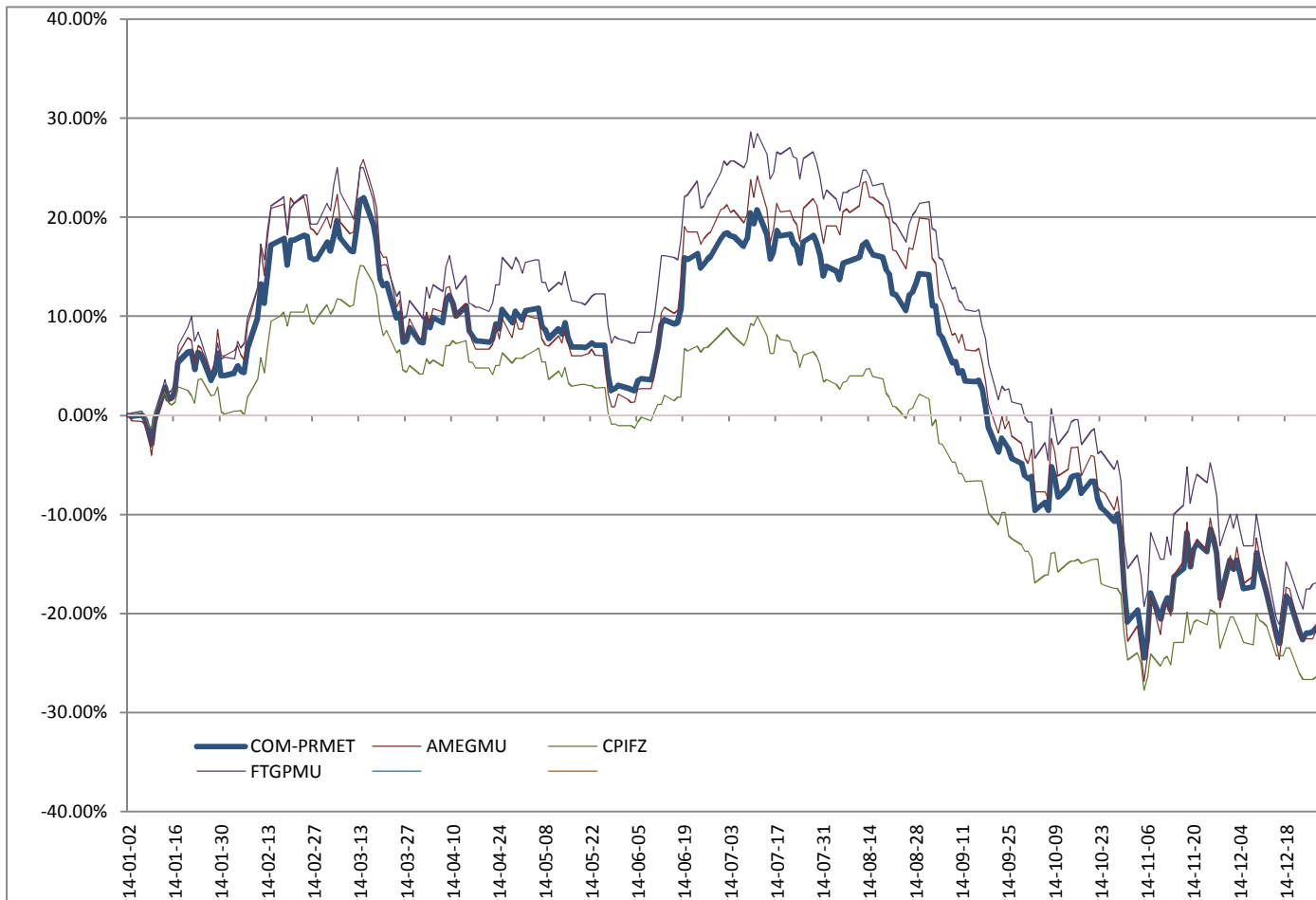


Rating Category	Commodities - Precious Metals			
Ccy	USD	AMUNDI FUNDS EQUITY GLOBAL GOLD MINES - AU	ČP Invest Fond zlatý	Franklin Templeton - Franklin Gold and Precious Metals Fund
Average Daily R _f O/N (p.a.)	0.0923%			
Correlation	1.00	0.98	0.92	0.97
Beta	1.00	1.26	0.70	1.04
Average Daily Return (p.a.)	-20.79%	-16.17%	-31.30%	-13.71%
Jensen's Alpha (p.a.)		10.04%	-16.82%	7.97%
Ranking (rank / number)		1/3	3/3	2/3

EIC Fund Ratings ©

★★★★★ ★★★★★ ★★★★★

Fund	COM-PRMET	AMEGMU	CPIFZ	FTGPMU
ISIN	Market	LU0568608276	CZ0008472370	LU0496367417



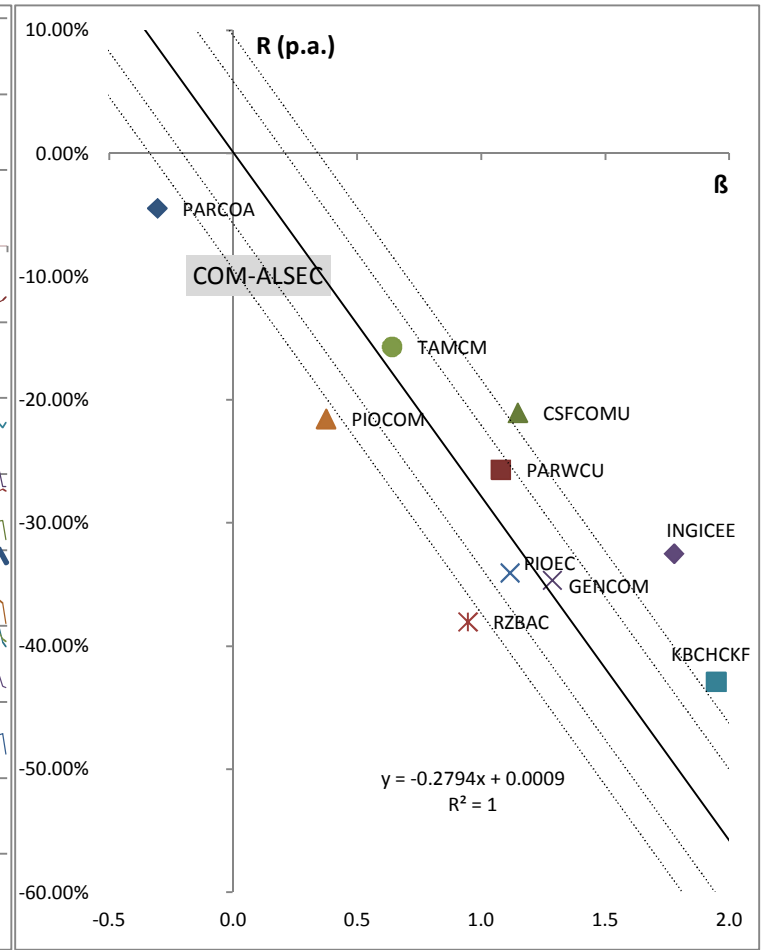
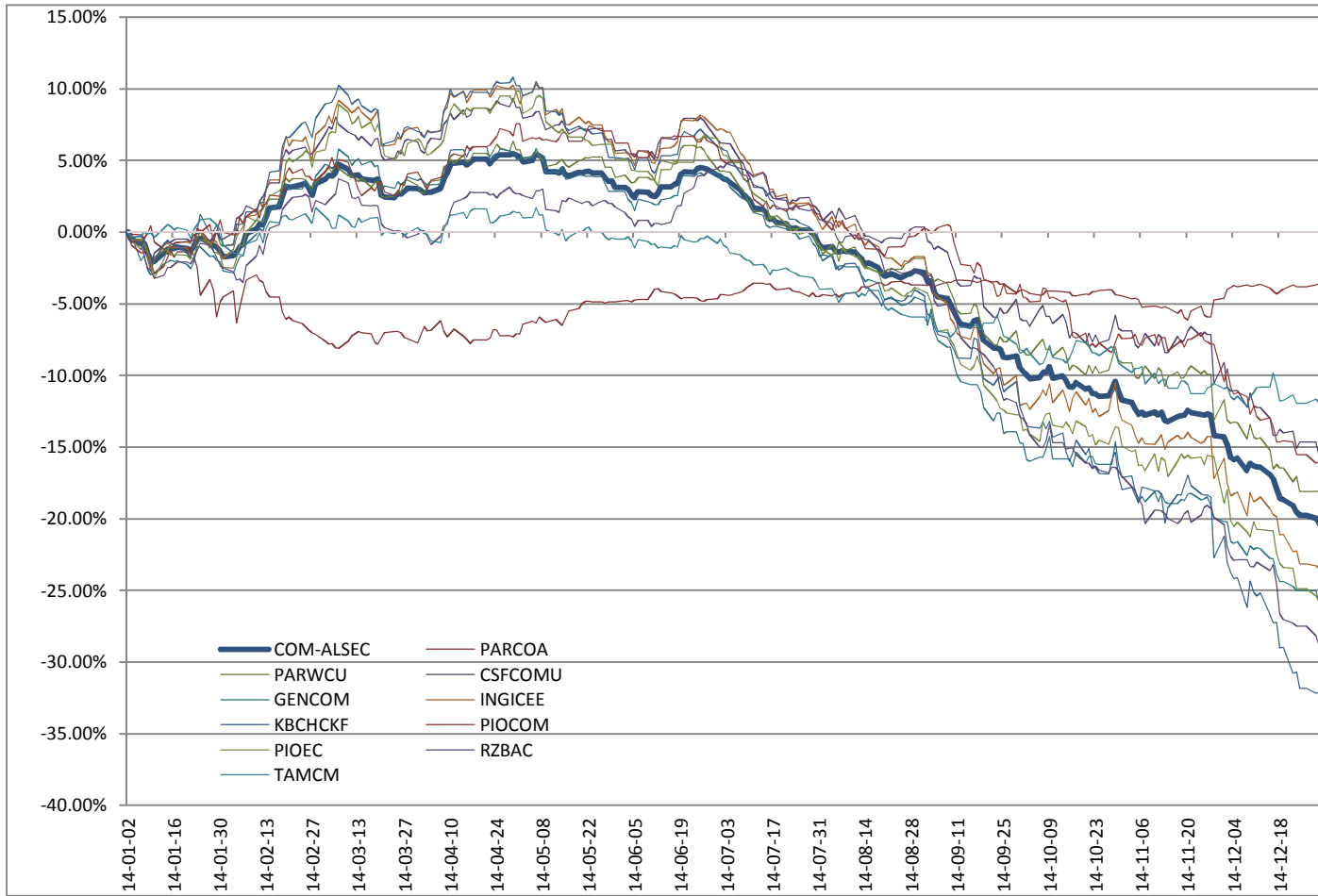
	R _f (p.a.)	R _m (p.a.)
SML + 1.64σ _(R_m)	45.7761%	24.90%
SML + σ _(R_m)	27.9483%	7.07%
SML - σ _(R_m)	-27.7636%	-48.64%
SML - 1.64σ _(R_m)	-45.5914%	-66.53%

Rating Category	Commodities - All sectors									
Ccy	USD	BNP Parvest COMMODITIES ARBITRAGE	BNP Parvest World Commodities USD	CSF (Lux) Commodity Index Plus (US\$) B	Generali CEE Komoditní fond - EUR	ING Invest Commodity Enhanced EUR	Horizon ČSOB Komoditní fond	Pioneer Funds - Commodity Alpha USD	Pioneer S.F. - EUR Commodities EUR	Raiffeisen-Active- Commodities
Average Daily R _f O/N (p.a.)	0.0923%									
Correlation	1.00	-0.28	0.68	0.68	0.82	0.87	0.84	0.25	0.58	0.63
Beta	1.00	-0.31	1.08	1.15	1.29	1.78	1.95	0.37	1.11	0.95
Average Daily Return (p.a.)	-27.85%	-4.43%	-25.66%	-21.03%	-34.65%	-32.48%	-42.90%	-21.54%	-34.04%	-38.03%
Jensen's Alpha (p.a.)		NR	4.38%	10.90%	1.16%	17.07%	11.39%	NR	-2.99%	-11.70%
Ranking (rank / number)		NR	4/8	3/8	6/8	1/8	2/8	NR	7/8	8/8

EIC Fund Ratings ©

Fund	COM-ALSEC	PARCOA	PARWCU	CSFCOMU	GENCOM	INGICEE	KBCHCKF	PIOCOM	PIOEC	RZBAC
ISIN	Market	LU0360653033	LU0823449938	LU0230918368	IE00B469TQ76	LU0518135024	BE0948266912	LU0313643297	LU0271695388	AT0000A0H0S9

NR ★★★★★★ ★★★★★★ ★★★★★★ ★★★★★★ ★★★★★★ ★★★★★★ ★★★★★★ NR ★★★★★★ ★★★★★★



	R _f (p.a.)	R _m (p.a.)
SML + 1.64σ _(R_m)	9.5841%	-18.36%
SML + σ _(R_m)	5.8800%	-22.06%
SML - σ _(R_m)	-5.6953%	-33.63%
SML - 1.64σ _(R_m)	-9.3995%	-37.35%

TAM Komoditný fond

0.54

0.64

-15.68%

2.10%

5/8



TAMCM

TAMCOMM
