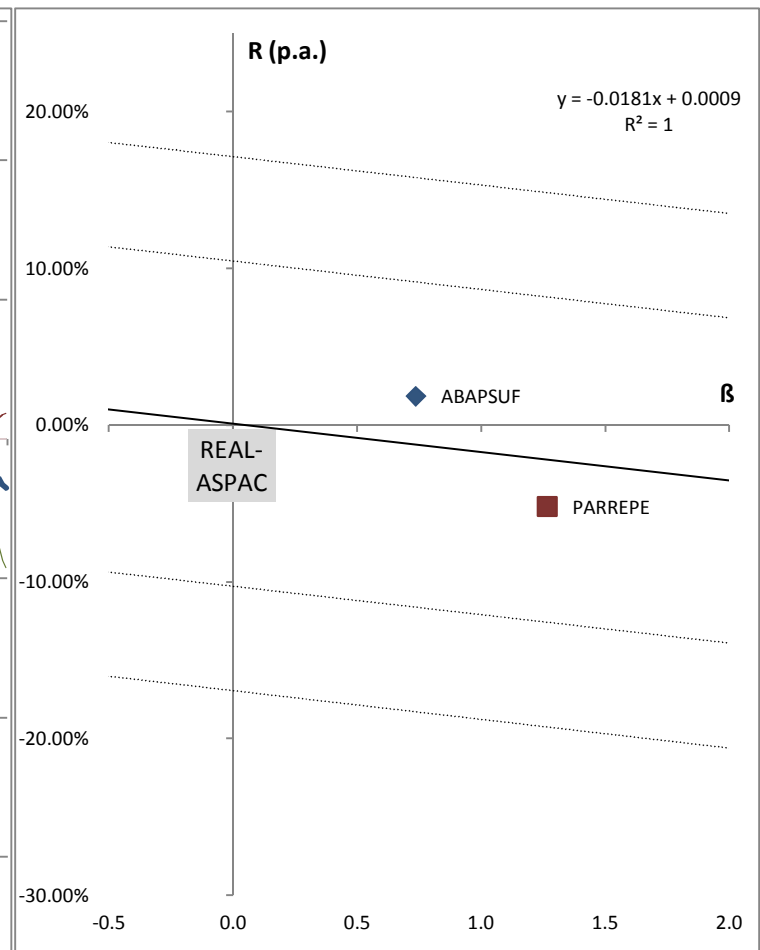
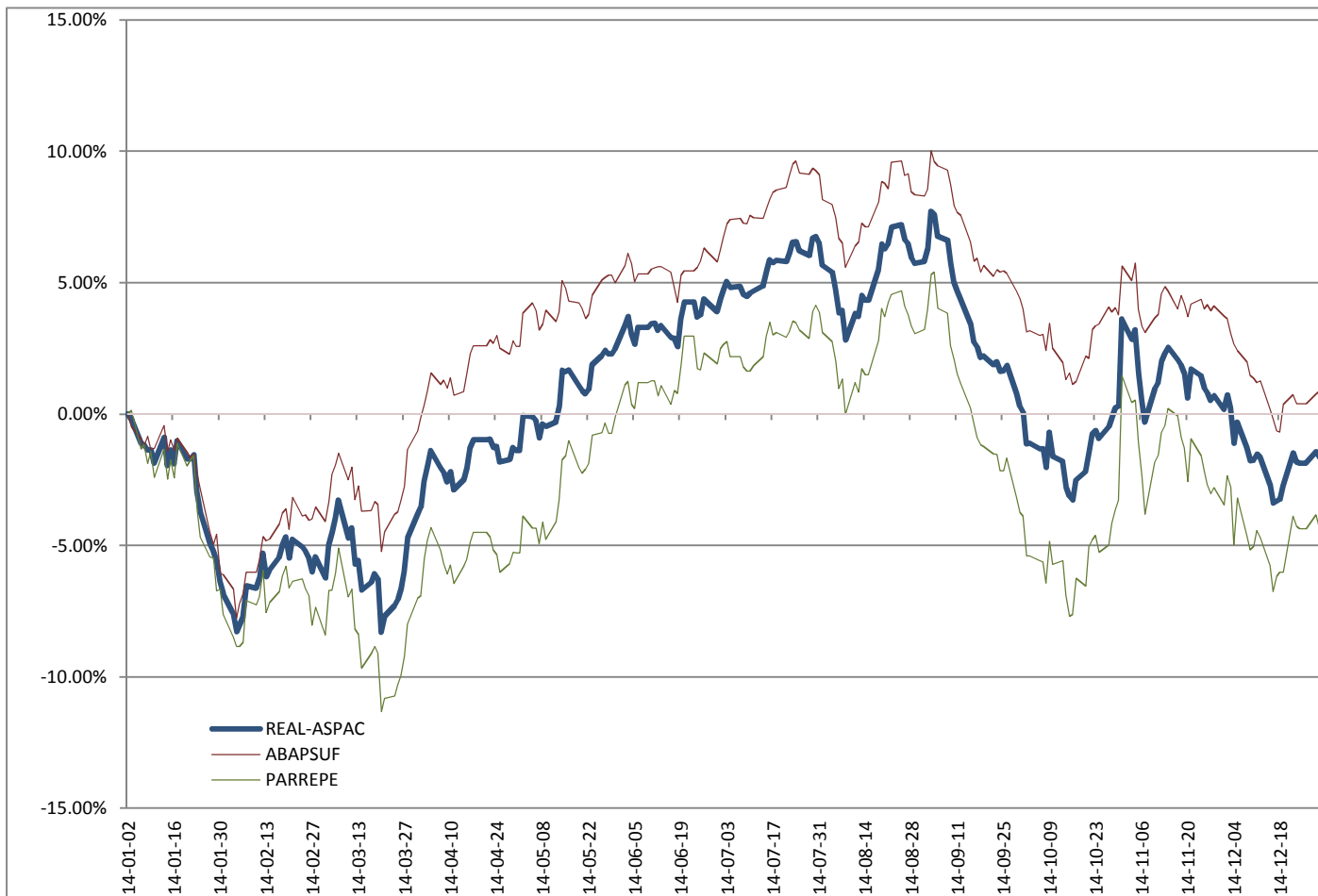


Rating Category	Real Estates - Asia Pacific		
Ccy	USD		
Average Daily R _f O/N (p.a.)	0.0923%	Aberdeen Global - Asian Property Share Fund	BNP Parvest Real Estate Securities Pacific EUR
Correlation	1.00	0.86	0.95
Beta	1.00	0.74	1.26
Average Daily Return (p.a.)	-1.72%	1.87%	-5.18%
Jensen's Alpha (p.a.)		3.11%	-2.98%
Ranking (rank / number)		1/2	2/2

EIC Fund Ratings ©



Fund	REAL-ASPAC	ABAPSUF	PARREPE
ISIN	Market	LU0476875439	LU0823443220



	R _f (p.a.)	R _m (p.a.)
SML + 1.64σ _(Rm)	17.1372%	15.33%
SML + σ _(Rm)	10.4856%	8.68%
SML - σ _(Rm)	-10.3009%	-12.11%
SML - 1.64σ _(Rm)	-16.9526%	-18.78%

Rating Category	Real Estates - CEE						
Ccy	EUR						
Average Euribor 1M R _f (p.a.)	1.1365%	Conseq Realitní	IAD Prvý realitný fond	ISČS ČS Nemovitostní fond	PRVÁ PENZIJNÁ NÁŠ PRVÝ REALITNÝ o.p.f.	TAM Realitný fond	
Correlation	1.00	0.88	0.17	0.87	0.20	0.47	
Beta	1.00	2.08	0.08	2.19	0.10	0.54	
Average Monthly Return (p.a.)	3.08%	2.12%	5.12%	0.83%	5.23%	2.18%	
Jensen's Alpha (p.a.)		-3.07%	NR	-4.57%	NR	-0.01%	
Ranking (rank / number)		2/3	NR	3/3	NR	1/3	

EIC Fund Ratings[®]

★★★★★

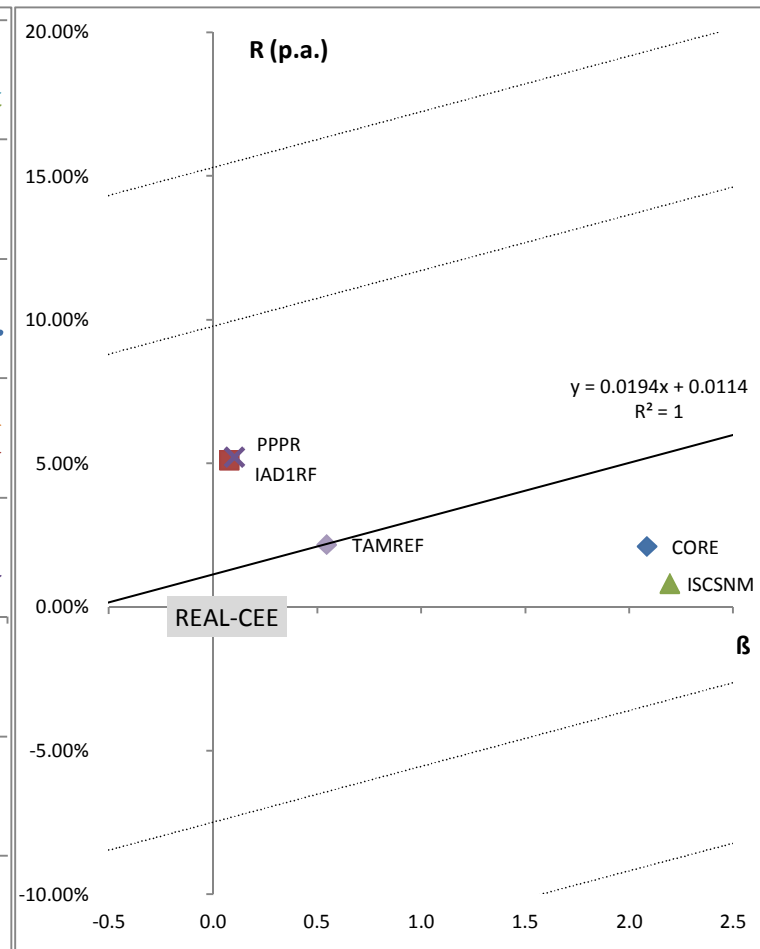
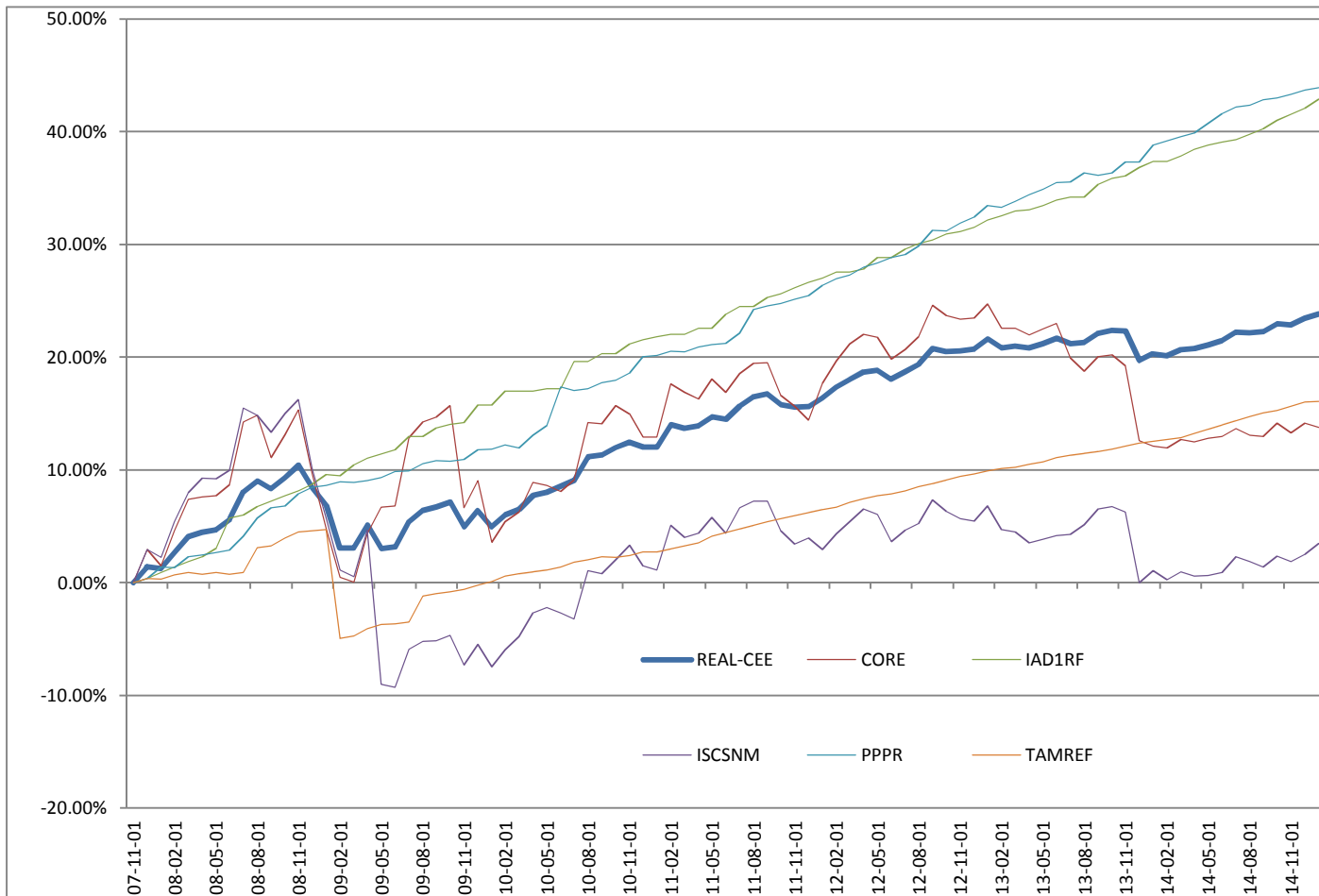
NR

★★★★★

NR

★★★★★

Fund	REAL-CEE	CORE	IAD1RF	ISCSNM	PPPR	TAMREF
ISIN	Market	CZ0008472859	IAD1RF	CZ0008472545	PPPR	TAMREAL



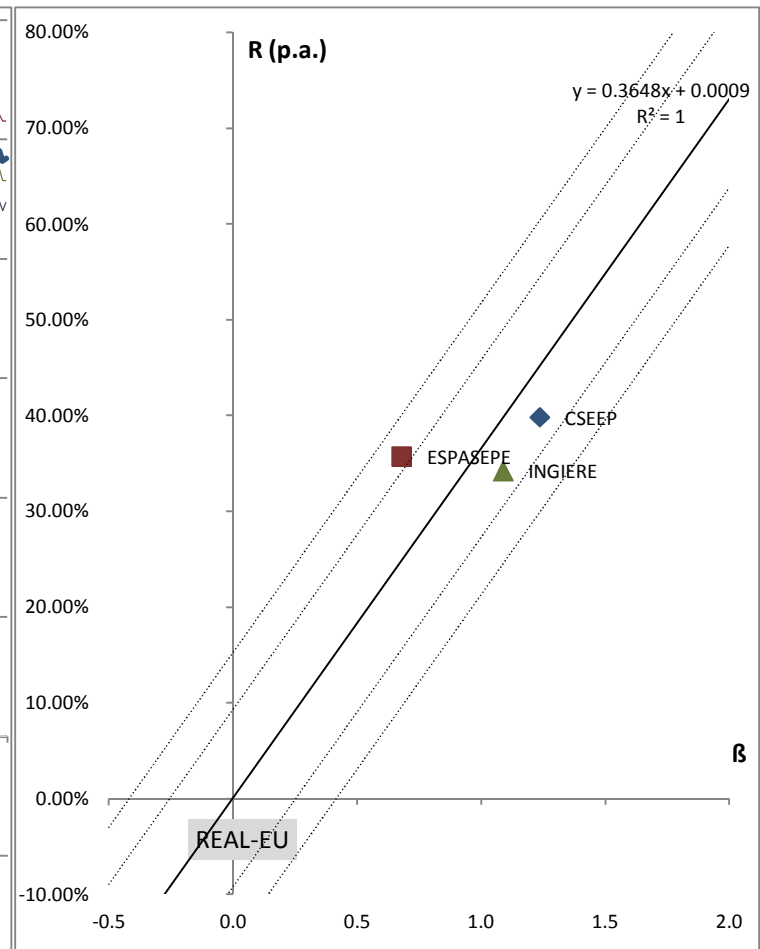
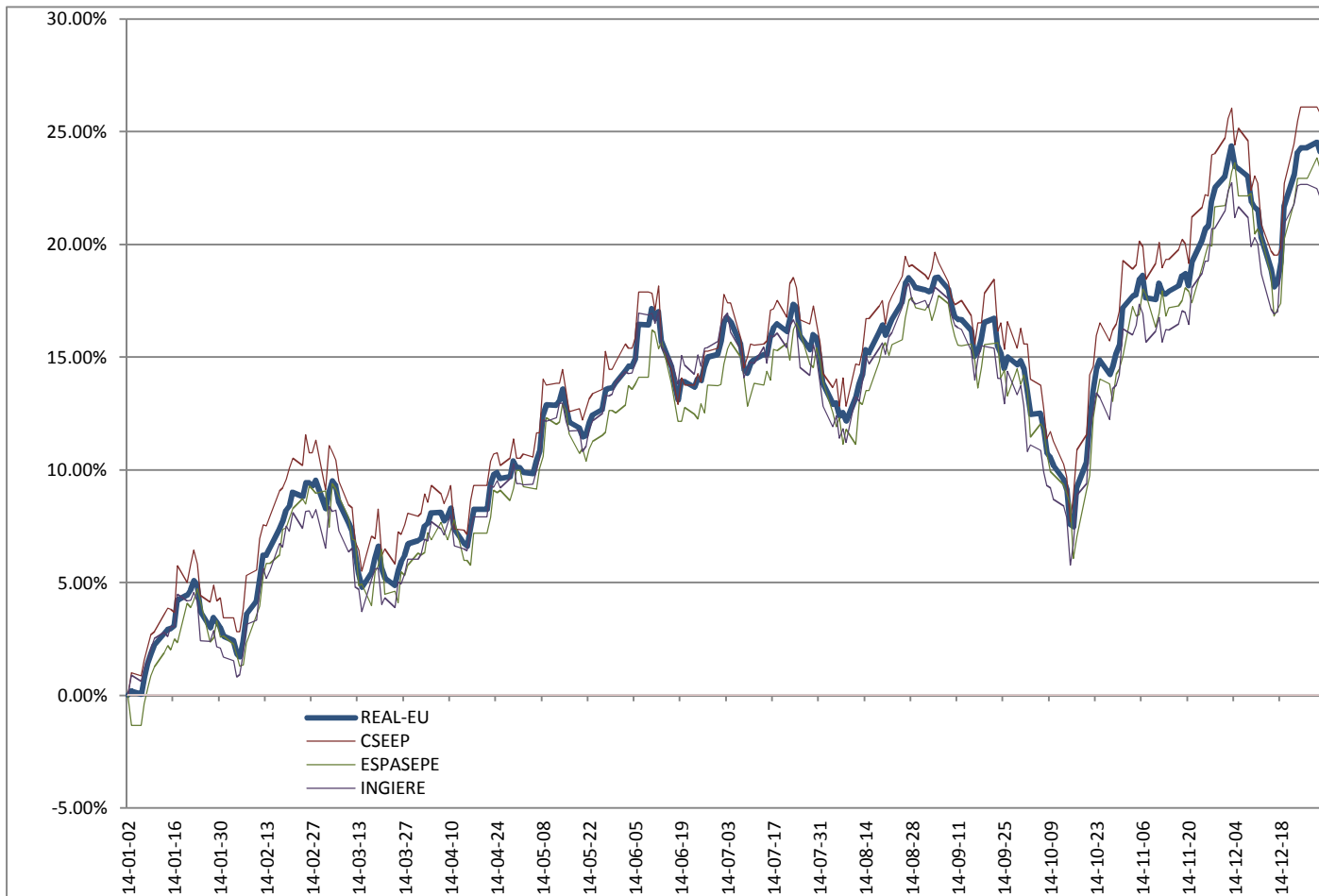
	R _f (p.a.)	R _m (p.a.)
SML + 1.64σ _(Rm)	15.2967%	17.24%
SML + σ _(Rm)	9.7708%	11.71%
SML - σ _(Rm)	-7.4978%	-5.56%
SML - 1.64σ _(Rm)	-13.0238%	-11.10%

Rating Category	Real Estates - Europe			
Ccy	EUR			
Average Daily R _f O/N (p.a.)	0.0937%	CS EF (Lux) European Property B	ESPA Stock Europe-Property EUR	ING Invest European Real Estate EUR
Correlation	1.00	0.88	0.51	0.87
Beta	1.00	1.24	0.68	1.09
Average Daily Return (p.a.)	36.57%	39.83%	35.74%	34.19%
Jensen's Alpha (p.a.)		-5.31%	10.93%	-5.56%
Ranking (rank / number)		2/3	1/3	3/3

EIC Fund Ratings ©

★★★★★ ★★★★★ ★★★★★

Fund	REAL-EU	CSEEP	ESPASEPE	INGIERE
ISIN	Market	LU012937381	AT0000613617	LU0121177280



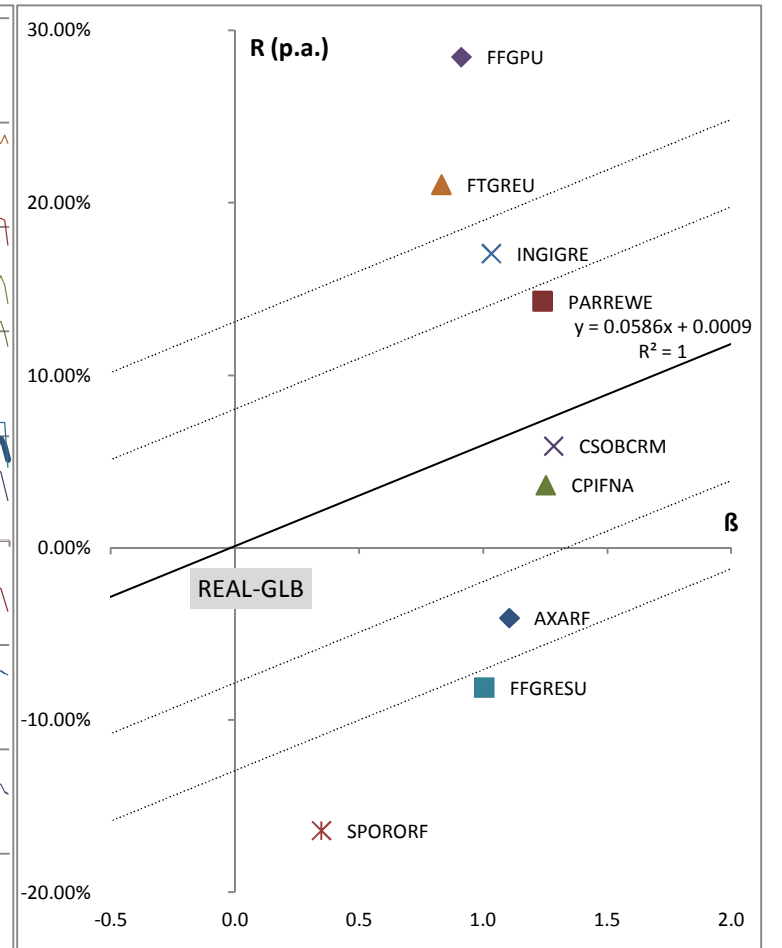
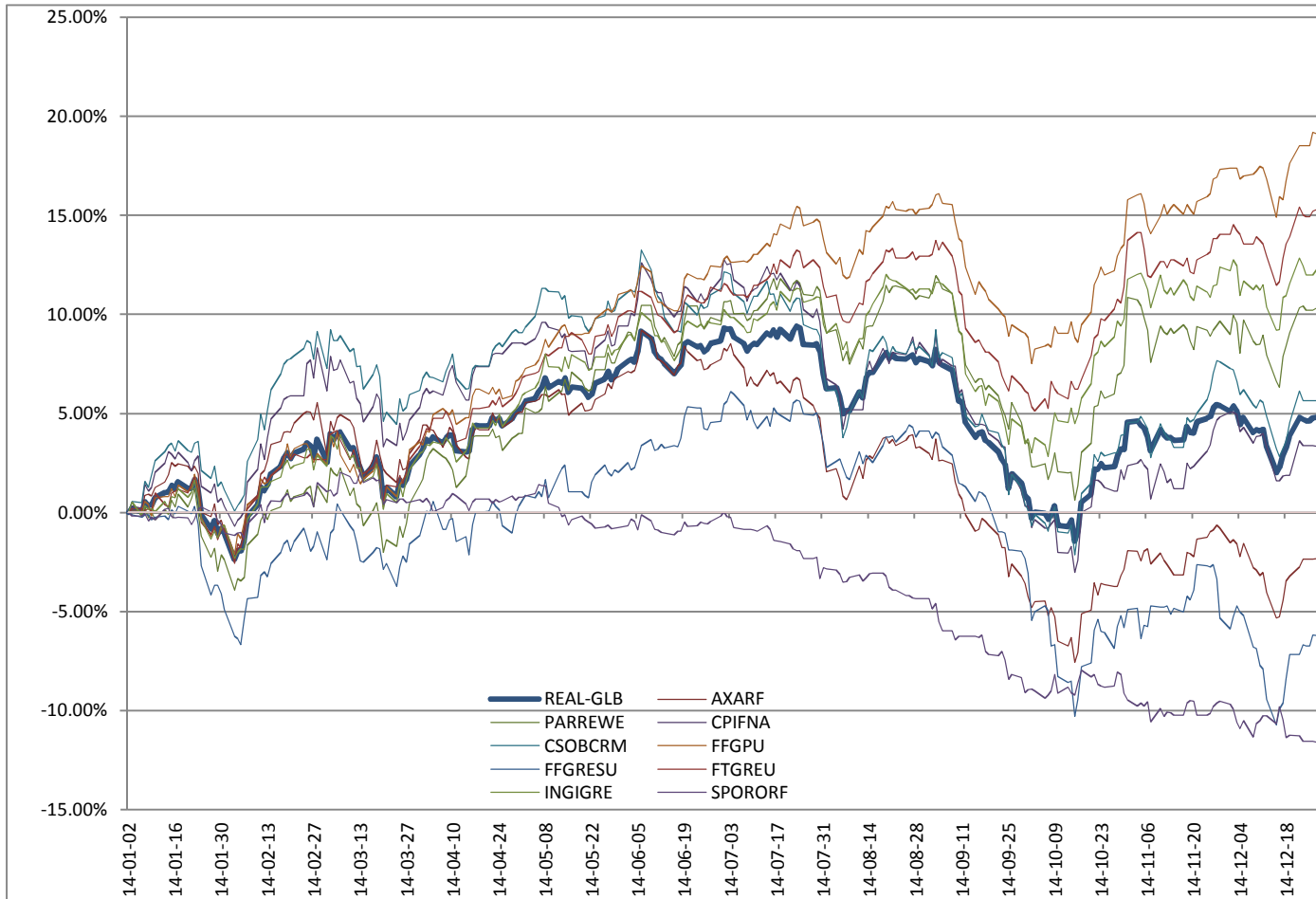
	R _f (p.a.)	R _m (p.a.)
SML + 1.64σ _(R_m)	15.3122%	51.79%
SML + σ _(R_m)	9.3732%	45.85%
SML - σ _(R_m)	-9.1859%	27.29%
SML - 1.64σ _(R_m)	-15.1248%	21.33%

Rating Category	Real Estates - Global										
Ccy	USD										
Average Daily R _f O/N (p.a.)	0.0923%	AXA Realitní fond	BNP Parvest Real Estate Securities World EUR	ČP Invest Fond nemovitostních akcií	ČSOB realitní mix	Fidelity - Global Property Fund A-ACC-USD	Fidelity - Global Real Asset Securities Fund A-ACC-USD	Franklin Templeton - Franklin Global Real Estate Fund A(acc)USD -	ING Invest Global Real Estate	SPORO Realitný fond	
Correlation	1.00	0.89	0.89	0.88	0.91	0.84	0.70	0.79	0.86	0.45	
Beta	1.00	1.10	1.24	1.25	1.28	0.91	1.00	0.83	1.03	0.35	
Average Daily Return (p.a.)	5.96%	-4.08%	14.30%	3.63%	5.90%	28.47%	-8.11%	21.07%	17.07%	-16.42%	
Jensen's Alpha (p.a.)		-10.64%	6.95%	-3.80%	-1.72%	23.04%	-14.08%	16.11%	10.93%	-18.54%	
Ranking (rank / number)		7/9	4/9	6/9	5/9	1/9	8/9	2/9	3/9	9/9	

EIC Fund Ratings



Fund	REAL-GLB	AXARF	PARREWE	CPIFNA	CSOBCRM	FFGPU	FFGRESU	FTGREU	INGIGRE	SPORORF
ISIN	Market	CZ0008472776	LU0823444111	CZ0008472396	CZ0008472222	LU0237698914	LU0417495479	LU0229948087	LU0250183208	SPORORF



	R _f (p.a.)	R _m (p.a.)
SML + 1.64σ _(R_m)	13.1078%	18.97%
SML + σ _(R_m)	8.0286%	13.89%
SML - σ _(R_m)	-7.8439%	-1.98%
SML - 1.64σ _(R_m)	-12.9231%	-7.08%