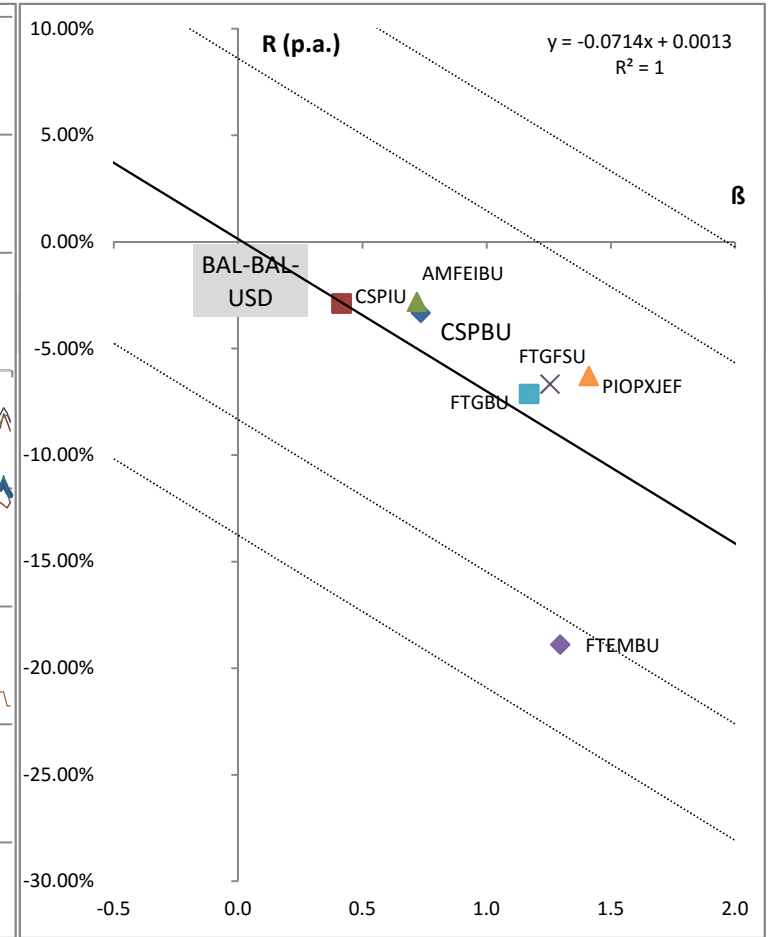
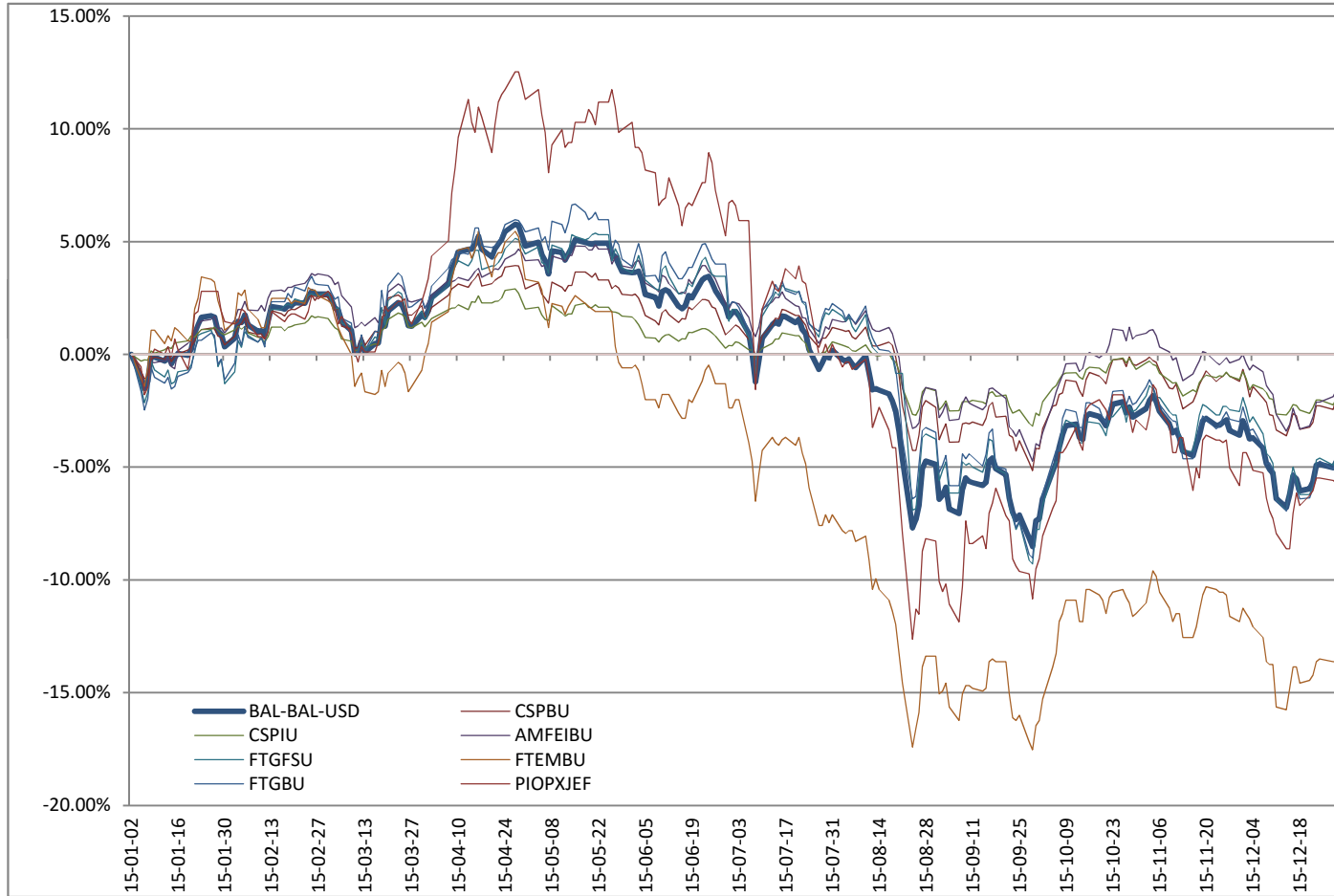


Rating Category	Balanced - balanced - USD									
Ccy	USD									
Average Daily R <sub>f</sub> O/N (p.a.)	0.1342%	CS PF (Lux) Balanced (US\$) B	CS PF (Lux) Income (US\$) B	First Eagle Amundi Income Builder Fund - AU	Franklin Templeton - Franklin Templeton Global Fundamental	Franklin Templeton - TEMPLETON EMERGING MARKETS	Franklin Templeton - Templeton Global Balanced Fund	Pioneer Funds - Asia (Ex. Japan) Equity USD		
Correlation	1.00	0.90	0.86	0.90	0.90	0.92	0.90	0.77		
Beta	1.00	0.73	0.42	0.72	1.25	1.30	1.17	1.41		
Average Daily Return (p.a.)	-7.01%	-3.33%	-2.88%	-2.80%	-6.66%	-18.89%	-7.13%	-6.28%		
Jensen's Alpha (p.a.)		<b>1.79%</b>	<b>-0.05%</b>	<b>2.20%</b>	<b>2.16%</b>	<b>-9.77%</b>	<b>1.10%</b>	<b>3.66%</b>		
Ranking (rank / number)		<b>4/7</b>	<b>6/7</b>	<b>2/7</b>	<b>3/7</b>	<b>7/7</b>	<b>5/7</b>	<b>1/7</b>		

EIC Fund Ratings ©



Fund	BAL-BAL-USD	CSPBU	CSPIU	AMFEIBU	FTGFSU	FTEMBU	FTGBU	PIOPXJEF
ISIN	Market	LU0078041133	LU0078046959	LU1095739816	LU0316494557	LU0608807433	LU0128525689	LU0132183822



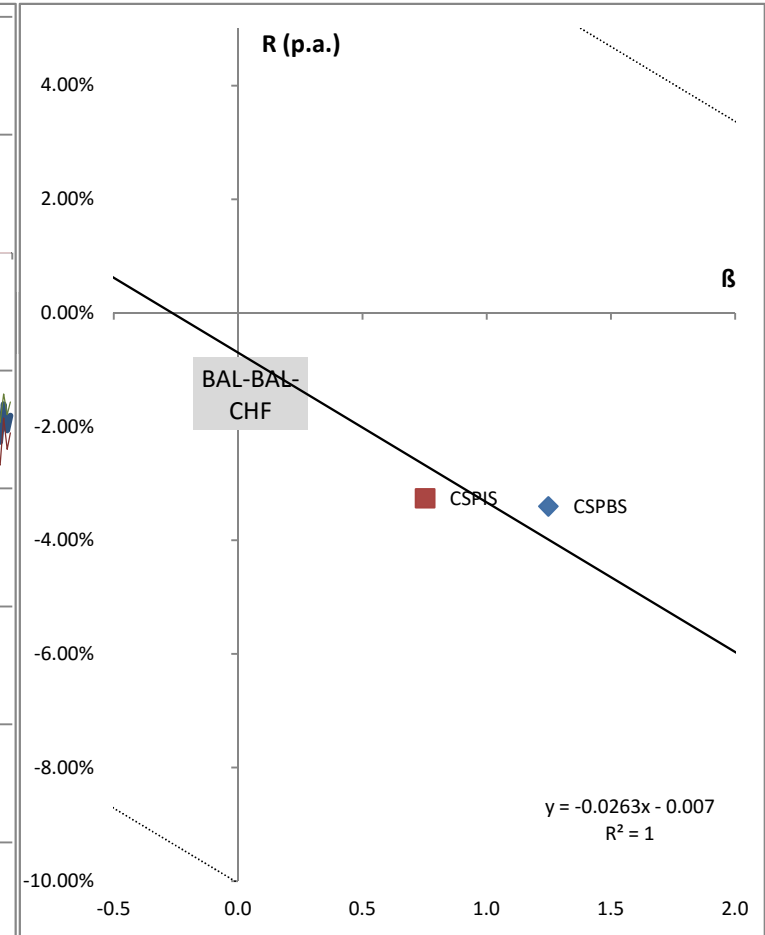
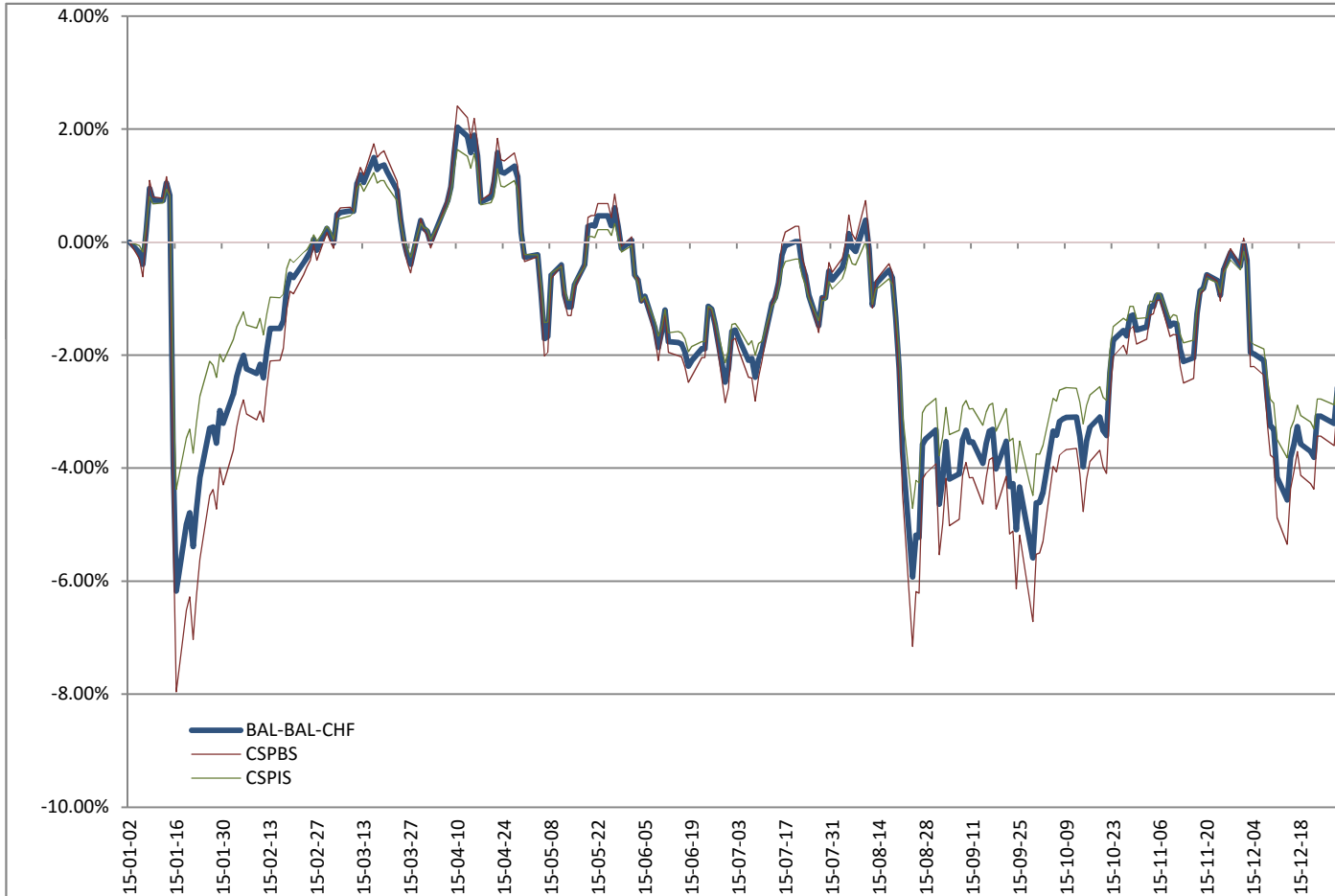
	R <sub>f</sub> (p.a.)	R <sub>m</sub> (p.a.)
SML + 1.64σ <sub>(R<sub>m</sub>)</sub>	14.0343%	6.89%
SML + σ <sub>(R<sub>m</sub>)</sub>	8.6099%	1.47%
SML - σ <sub>(R<sub>m</sub>)</sub>	-8.3415%	-15.48%
SML - 1.64σ <sub>(R<sub>m</sub>)</sub>	-13.7660%	-20.92%

Rating Category	Balanced - balanced - CHF		
Ccy	CHF		
Average Daily R <sub>f</sub> O/N (p.a.)	-0.6967%	CS PF (Lux) Balanced (SFR) B	CS PF (Lux) Income (SFR) B
Correlation	1.00	1.00	1.00
Beta	1.00	1.25	0.75
Average Daily Return (p.a.)	-3.33%	-3.40%	-3.26%
Jensen's Alpha (p.a.)		<b>0.58%</b>	<b>-0.58%</b>
Ranking (rank / number)		<b>1/2</b>	<b>2/2</b>

EIC Fund Ratings ©



Fund	BAL-BAL-CHF	CSPBS	CSPIS
ISIN	Market	LU0078040838	LU0078042883



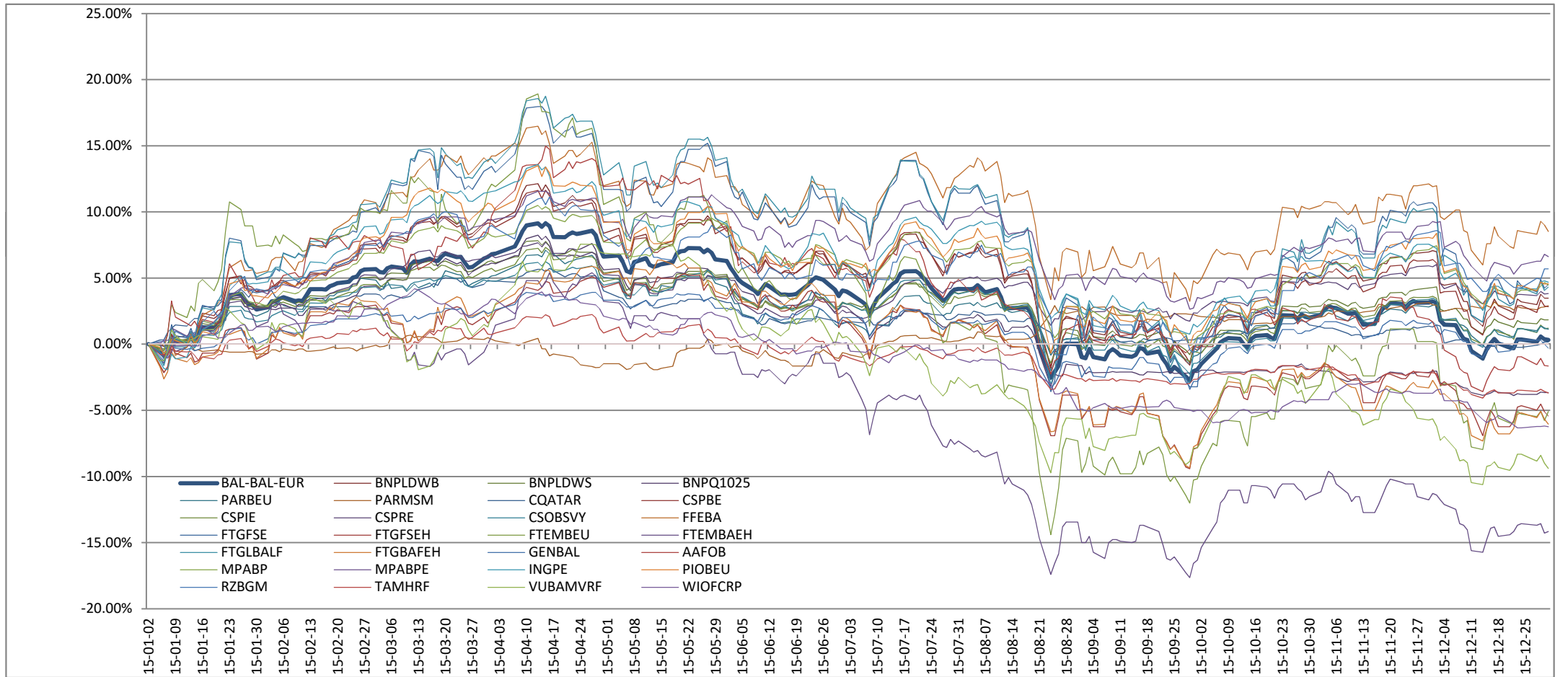
	R <sub>f</sub> (p.a.)	R <sub>m</sub> (p.a.)
SML + 1.64σ <sub>(R<sub>m</sub>)</sub>	14.6146%	11.98%
SML + σ <sub>(R<sub>m</sub>)</sub>	8.6395%	6.01%
SML - σ <sub>(R<sub>m</sub>)</sub>	-10.0329%	-12.67%
SML - 1.64σ <sub>(R<sub>m</sub>)</sub>	-16.0081%	-18.66%

Rating Category	Balanced - balanced - EUR										
Ccy	EUR	BNP Paribas L1 Diversified World Balanced	BNP Paribas L1 Diversified World Stability	BNP Paribas Quam Fund 10/25	BNP Parvest Diversified (Dynamic)	BNP Parvest Multi-Strategy Medium Vol	C-QUADRAT APM Absolute Return VT	CS PF (Lux) Balanced (EURO) B	CS PF (Lux) Income (EURO) B	CS PF (Lux) Reddito (EURO) B	
Average Daily R <sub>f</sub> O/N (p.a.)	-0.1677%										
Correlation	1.00	0.93	0.91	0.73	0.81	0.10	0.29	0.93	0.91	0.85	
Beta	1.00	1.33	0.77	0.61	0.76	0.05	0.16	1.41	0.85	0.68	
Average Daily Return (p.a.)	0.81%	5.77%	2.90%	-4.97%	1.93%	4.27%	0.33%	4.90%	2.03%	5.76%	
Jensen's Alpha (p.a.)		4.63%	2.31%	-5.40%	1.35%	NR	NR	3.69%	1.37%	5.26%	
Ranking (rank / number)		9/23	11/23	17/23	13/23	NR	NR	10/23	12/23	8/23	

EIC Fund Ratings ©

★★★★★☆☆    ★★★★★☆☆    ★★★★★☆☆    ★★★★★☆☆    NR    NR    ★★★★★☆☆    ★★★★★☆☆    ★★★★★☆☆

Fund	BAL-BAL-EUR	BNPLDWB	BNPLDWS	BNPQ1025	PARBEU	PARMSM	CQATAR	CSPBE	CSPIE	CSPRE
ISIN	Market	LU0132151118	LU0132151621	LU0236673397	LU0089291651	LU0662593408	AT0000497698	LU0091100973	LU0091100890	LU0078046520

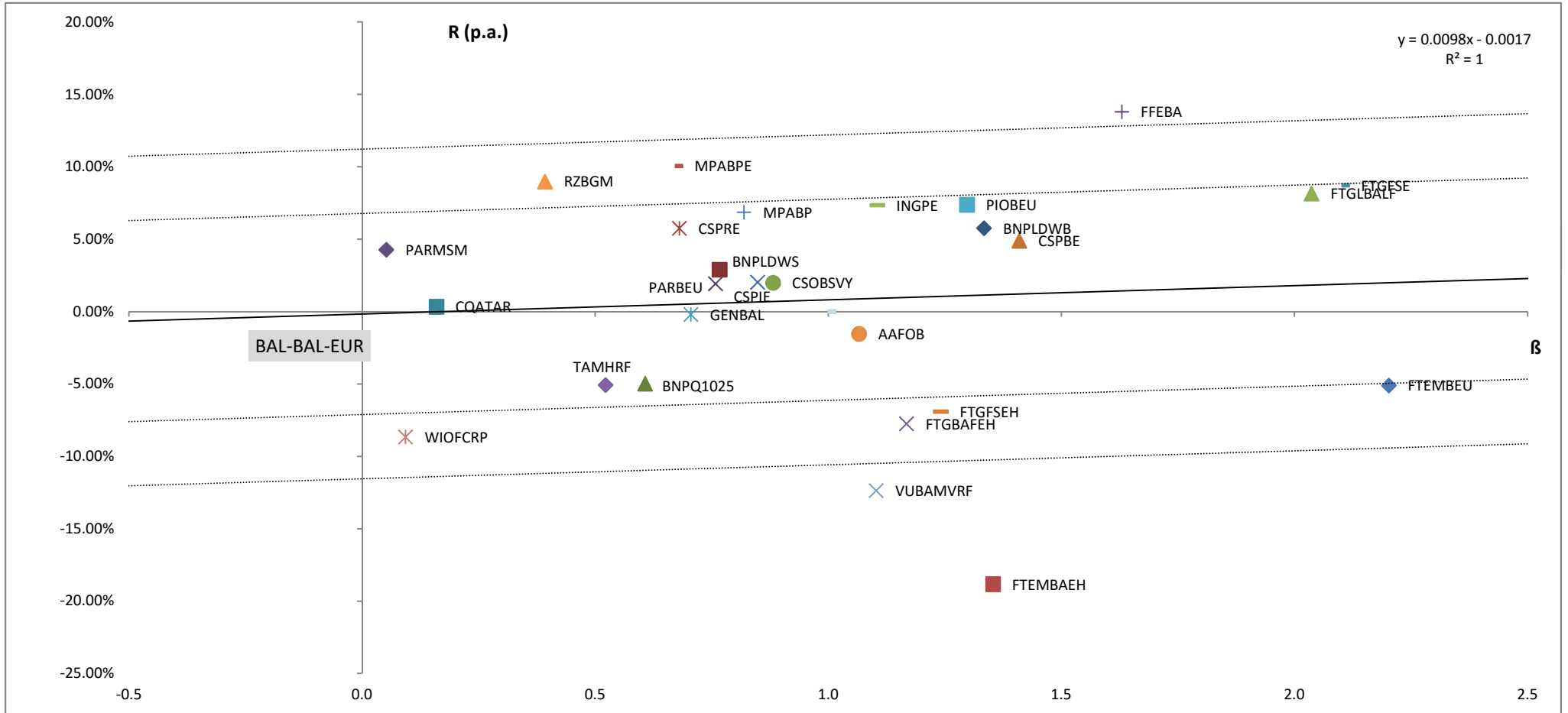


	R <sub>f</sub> (p.a.)	R <sub>m</sub> (p.a.)
SML + 1.64σ <sub>(R<sub>m</sub>)</sub>	11.2235%	12.20%
SML + σ <sub>(R<sub>m</sub>)</sub>	6.7782%	7.76%
SML - σ <sub>(R<sub>m</sub>)</sub>	-7.1135%	-6.13%
SML - 1.64σ <sub>(R<sub>m</sub>)</sub>	-11.5588%	-10.59%

ČSOB Vyvážený	Fidelity - Euro Balanced Fund A-ACC-EUR	Franklin Templeton - Franklin Templeton Global Fundamental	Franklin Templeton - Franklin Templeton Global Fundamental	Franklin Templeton - TEMPLETON EMERGING MARKETS	Franklin Templeton - TEMPLETON EMERGING MARKETS	Franklin Templeton - Templeton Global Balanced Fund	Franklin Templeton - Templeton Global Balanced Fund	Generali CEE Balancovaný fond - EUR	IAD Optimal Balanced	Momentum Plus Aktiv Balancované portfolio
0.92	0.87	0.86	0.79	0.87	0.79	0.90	0.74	0.85	0.68	0.80
0.88	1.63	2.10	1.24	2.20	1.35	2.04	1.17	0.71	1.07	0.82
1.99%	13.80%	8.72%	-6.91%	-5.11%	-18.83%	8.15%	-7.75%	-0.20%	-1.54%	6.86%
<b>1.29%</b>	<b>12.37%</b>	<b>6.83%</b>	<b>-7.96%</b>	<b>-7.10%</b>	<b>-19.99%</b>	<b>6.33%</b>	<b>-8.72%</b>	<b>-0.72%</b>	<b>-2.41%</b>	<b>6.23%</b>
<b>14/23</b>	<b>1/23</b>	<b>3/23</b>	<b>20/23</b>	<b>19/23</b>	<b>23/23</b>	<b>5/23</b>	<b>21/23</b>	<b>15/23</b>	<b>16/23</b>	<b>7/23</b>

★★★★★☆☆   ★★★★★★★   ★★★★★☆☆   ★★★★★☆☆   ★★★★★☆☆   ★★★★★☆☆   ★★★★★☆☆   ★★★★★☆☆   ★★★★★☆☆   ★★★★★☆☆   ★★★★★☆☆

CSOBSVY	FFEBA	FTGFSE	FTGFSEH	FTEMBEU	FTEBBAEH	FTGLBALF	FTGBAFEH	GENBAL	AAFOB	MPABP
0	LU0261950553	LU0316494805	LU0316494987	LU0608807516	LU0608807789	LU0195953822	LU0316492858	IE00BGLNMD67	SK3210000038	LU0326451860



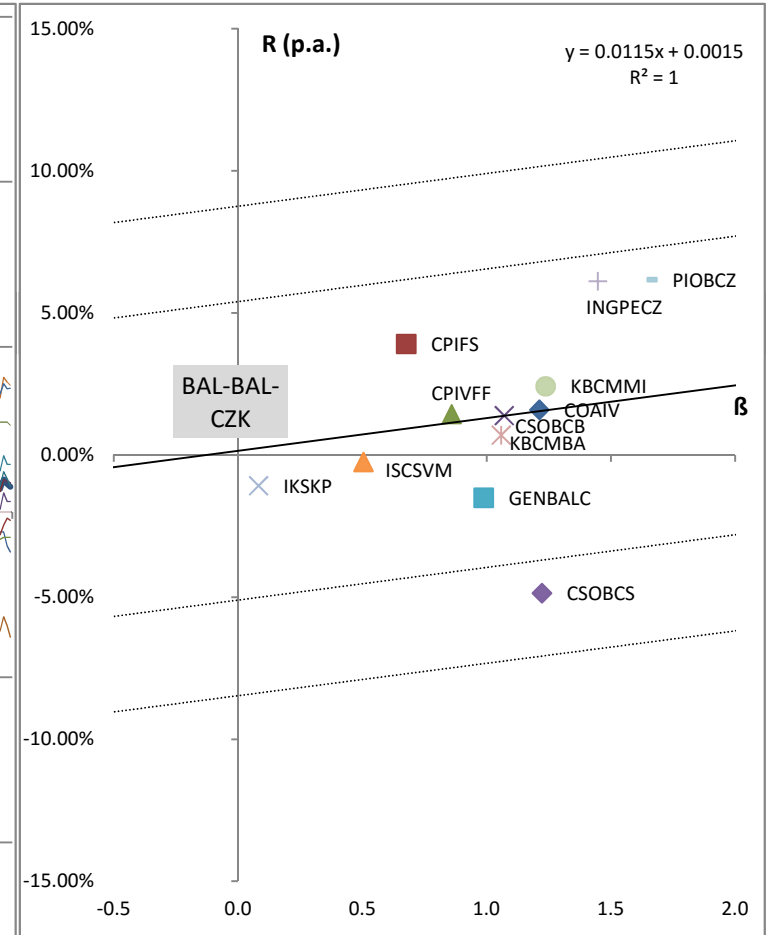
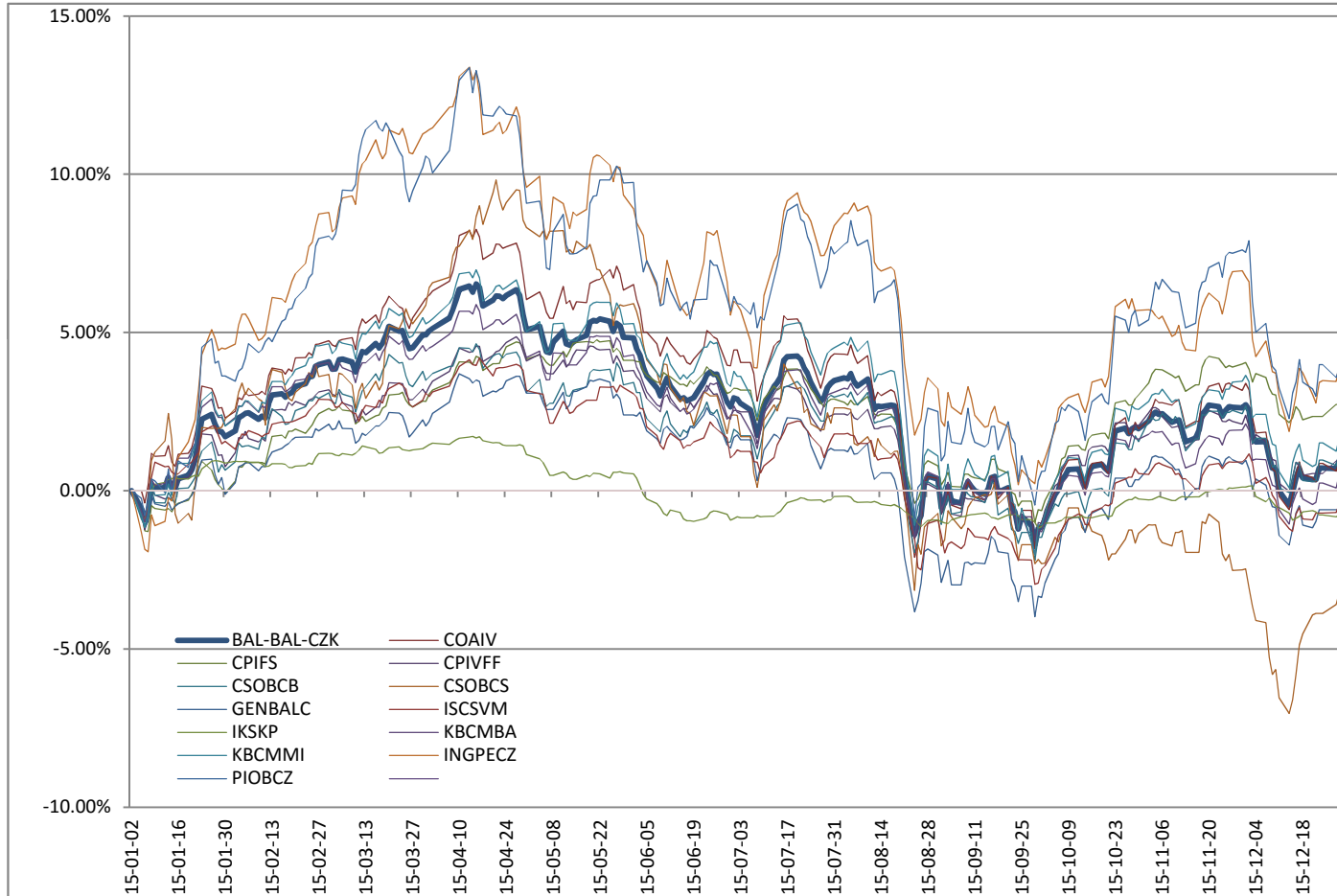
Moventum Plus Aktiv Balancované portfolio Europa	NN Patrimonial Euro EUR	Pioneer Fund Solutions - Balanced EUR	Raiffeisen- Nachhaltigkeitsfonds-Mix	TAM HarmonicFund	VUBAM Vyvážený Rastový fond	WIOF Conservative Risk 3% Portfolio - Class A
0.62	0.88	0.90	0.28	0.74	0.67	0.13
0.67	1.11	1.30	0.39	0.52	1.10	0.09
10.05%	7.36%	7.38%	8.99%	-5.07%	-12.36%	-8.66%
<b>9.56%</b>	<b>6.45%</b>	<b>6.28%</b>	<b>NR</b>	<b>-5.41%</b>	<b>-13.28%</b>	<b>NR</b>
<b>2/23</b>	<b>4/23</b>	<b>6/23</b>	<b>NR</b>	<b>18/23</b>	<b>22/23</b>	<b>NR</b>
★★★★★☆☆	★★★★★☆☆	★★★★★☆☆	NR	★★★★★☆☆	★★★★★☆☆	NR
<b>MPABPE</b>	<b>INGPE</b>	<b>PIOBEU</b>	<b>RZBGM</b>	<b>TAMHRF</b>	<b>VUBAMVRF</b>	<b>WIOFCRP</b>
LU0326454708	LU0121217920	LU1121646779	AT0000785381	TAMHARM	VRF	LU0267833050

Rating Category	Balanced - balanced - CZK										
Ccy	CZK										
Average Daily R <sub>f</sub> O/N (p.a.)	0.1454%	Conseq Active Invest Vyvážený	Generali Fond smíšený	Generali Vyvážený fond fondů	ČSOB bohatství	ČSOB středoevropský	Generali CEE Balancovaný fond - CZK	ISČS VYVÁŽENÝ MIX FF	KB KONZERVATIVNÍ PROFIL	KBC Master Fund	CSOB Balanced
Correlation	1.00	0.94	0.87	0.91	0.92	0.74	0.91	0.62	0.30	0.95	
Beta	1.00	1.21	0.68	0.86	1.07	1.22	0.99	0.50	0.08	1.06	
Average Daily Return (p.a.)	1.30%	1.59%	3.91%	1.44%	1.39%	-4.86%	-1.50%	-0.24%	-1.07%	0.70%	
Jensen's Alpha (p.a.)		0.06%	2.99%	0.31%	0.01%	-6.41%	-2.78%	-0.96%	NR	-0.66%	
Ranking (rank / number)		6/11	3/11	5/11	7/11	11/11	10/11	9/11	NR	8/11	

EIC Fund Ratings®



Fund	BAL-BAL-CZK	COAIV	CPIFS	CPIVFF	CSOBCB	CSOBCS	GENBALC	ISCSVM	IKSKP	KBCMBA
ISIN	Market	CZ0008474210	CZ0008471760	CZ0008473287	7.7E+11	7.7E+11	IE00BGLNMF81	CZ0008472339	CZ0008472156	BE0174401928



	R <sub>f</sub> (p.a.)	R <sub>m</sub> (p.a.)
SML + 1.64σ <sub>(R<sub>m</sub>)</sub>	8.7574%	9.91%
SML + σ <sub>(R<sub>m</sub>)</sub>	5.3966%	6.55%
SML - σ <sub>(R<sub>m</sub>)</sub>	-5.1058%	-3.96%
SML - 1.64σ <sub>(R<sub>m</sub>)</sub>	-8.4665%	-7.33%

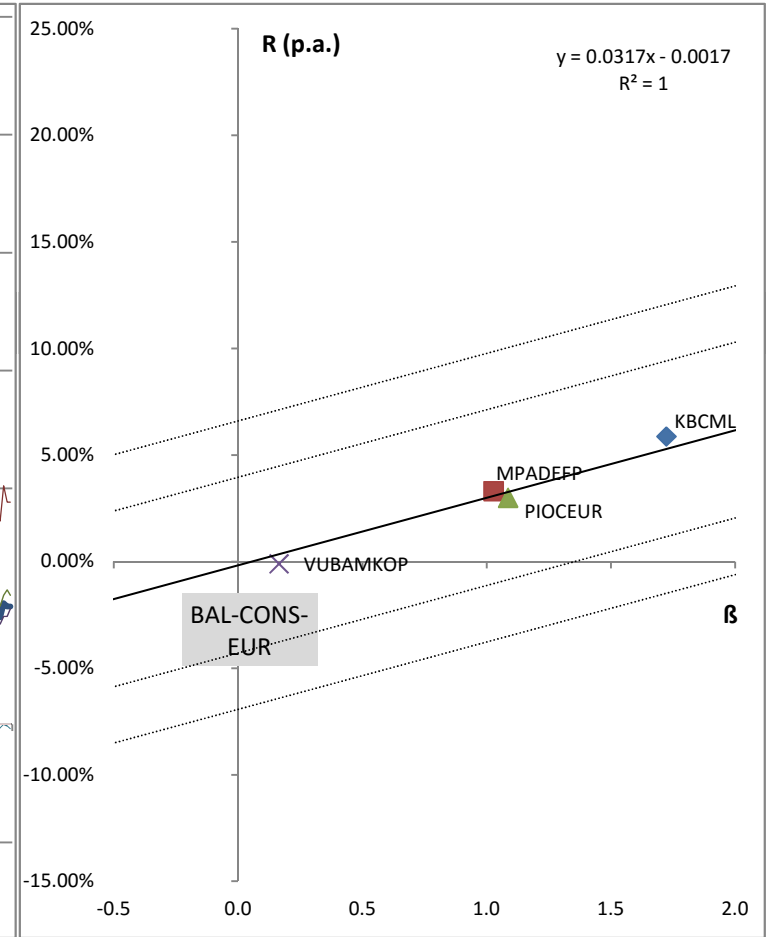
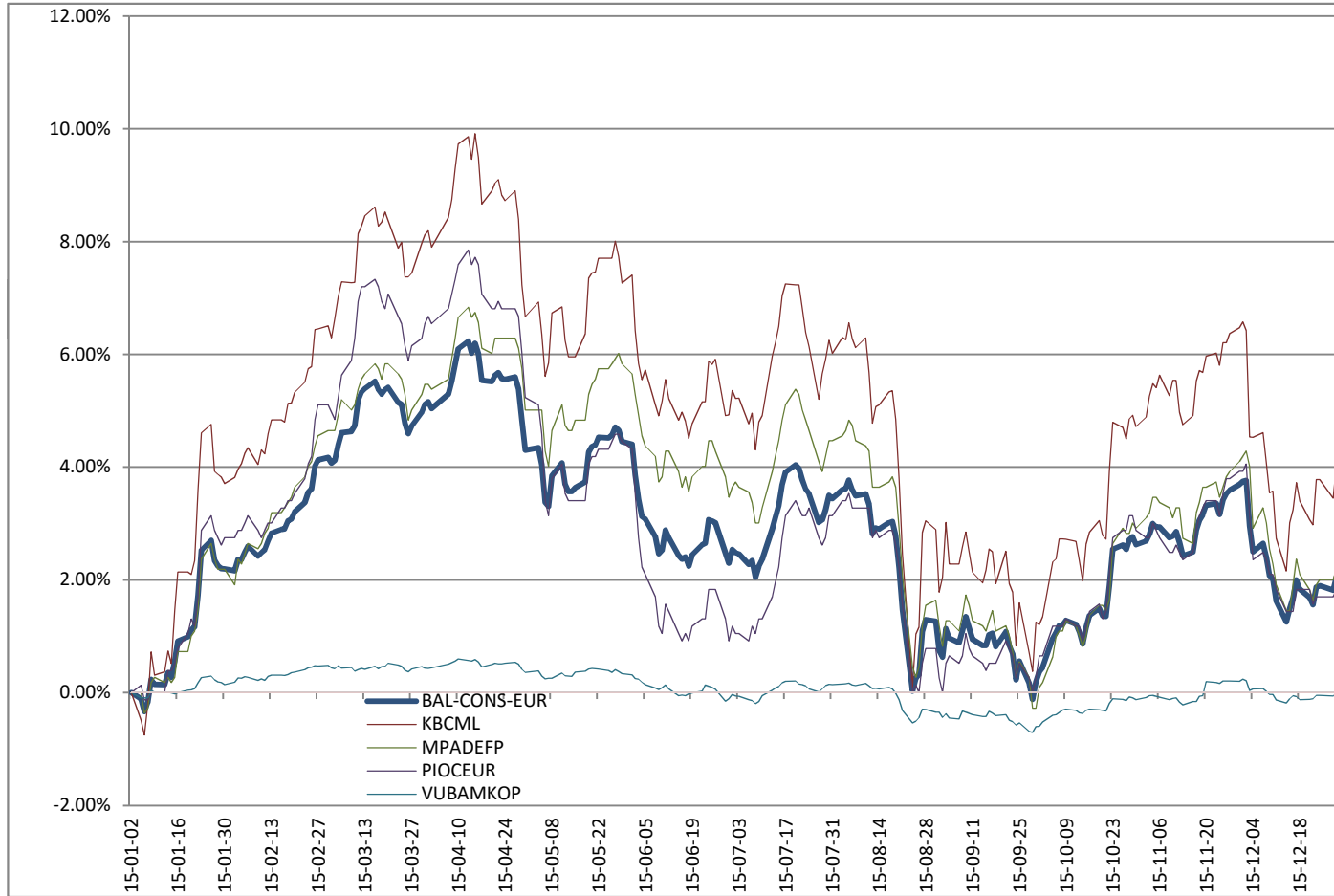
KBC Master Fund Mixed Fund	NN Patrimonial Euro CZK	Pioneer Fund Solutions - Balanced CZK
0.95	0.87	0.87
1.24	1.45	1.65
2.42%	6.12%	6.17%
<b>0.85%</b>	<b>4.31%</b>	<b>4.13%</b>
<b>4/11</b>	<b>1/11</b>	<b>2/11</b>
★★★★☆	★★★★☆	★★★★☆
<b>KBCMMI</b>	<b>INGPE CZ</b>	<b>PIOBCZ</b>
BE0943801887	LU0405489120	LU1121646696

Rating Category	Balanced - conservative - EUR				
Ccy	EUR				
Average Daily R <sub>f</sub> O/N (p.a.)	-0.1677%	KBC Master Fund Low	Moventum Plus Aktiv Defenzivní portfolio	Pioneer Fund Solutions - Conservative EUR	VUBAM Konzervatívne Portfólio
Correlation	1.00	0.94	0.90	0.92	0.75
Beta	1.00	1.72	1.03	1.09	0.16
Average Daily Return (p.a.)	3.00%	5.87%	3.31%	3.00%	-0.10%
Jensen's Alpha (p.a.)		0.59%	0.23%	-0.27%	-0.45%
Ranking (rank / number)		1/4	2/4	3/4	4/4

EIC Fund Ratings ©



Fund	BAL-CONS-EUR	KBCML	MPADEFPP	PIOCEUR	VUBAMKOP
ISIN	Market	BE0149027352	LU0326463287	LU1121647660	KOP



	R <sub>f</sub> (p.a.)	R <sub>m</sub> (p.a.)
SML + 1.64σ <sub>(R<sub>m</sub>)</sub>	6.5979%	9.76%
SML + σ <sub>(R<sub>m</sub>)</sub>	3.9577%	7.12%
SML - σ <sub>(R<sub>m</sub>)</sub>	-4.2930%	-1.13%
SML - 1.64σ <sub>(R<sub>m</sub>)</sub>	-6.9333%	-3.78%

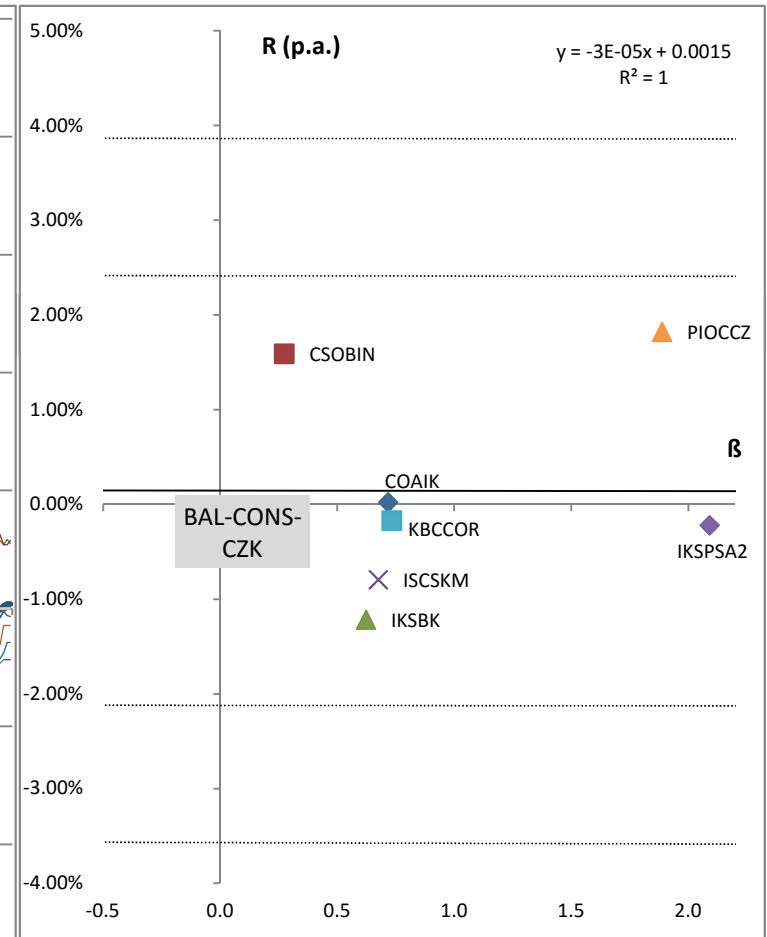
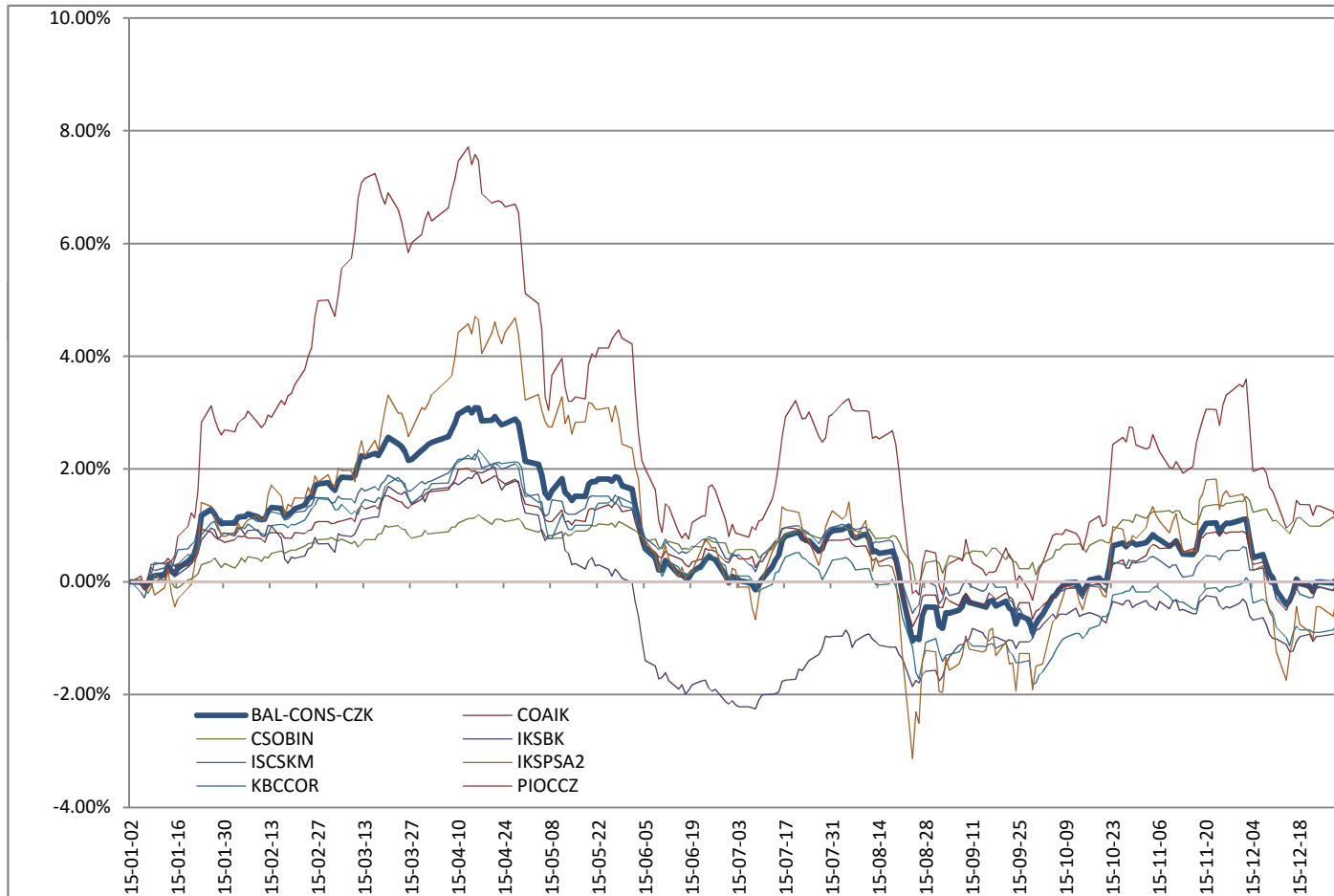


Rating Category	Balanced - conservative - CZK									
Ccy	CZK									
Average Daily R <sub>f</sub> O/N (p.a.)	0.1454%	Conseq Active Invest Konzervativní	ČSOB institucionální - nadační	IKS BALANCOVANÝ KONZERVATIVNÍ	ISČS KONZERVATIVNÍ MIX FF	KB PRIVÁTNÍ SPRÁVA AKTIV 2	KBC Master Fund CSOB Conservative	Pioneer Fund Solutions - Conservative CZK		
Correlation	1.00	0.89	0.46	0.71	0.72	0.91	0.85	0.90		
Beta	1.00	0.72	0.27	0.62	0.68	2.09	0.73	1.89		
Average Daily Return (p.a.)	0.14%	0.02%	1.59%	-1.22%	-0.79%	-0.22%	-0.17%	1.82%		
Jensen's Alpha (p.a.)		-0.12%	1.45%	-1.36%	-0.94%	-0.36%	-0.31%	1.68%		
Ranking (rank / number)		3/7	2/7	7/7	6/7	5/7	4/7	1/7		

EIC Fund Ratings ©



Fund	BAL-CONS-CZK	COAIK	CSOBIN	IKSBK	ISCSKM	IKSPSA2	KBCCOR	PIOCCZ
ISIN	Market	CZ0008474194	7.7002E+11	CZ0008472008	CZ0008472321	CZ0008473154	BE0174399908	LU1121647744



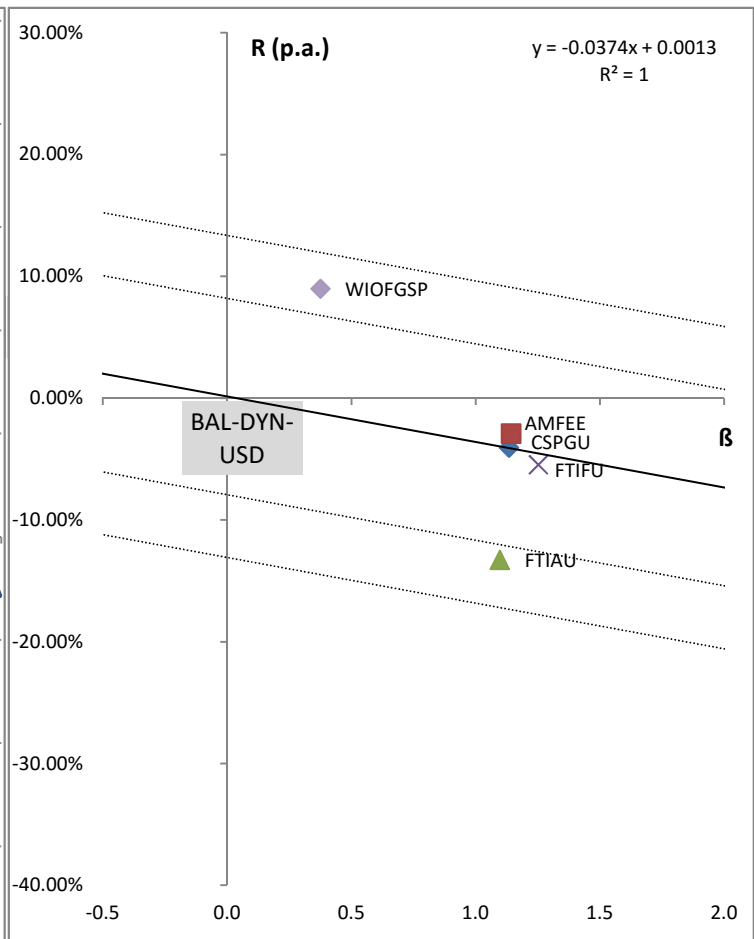
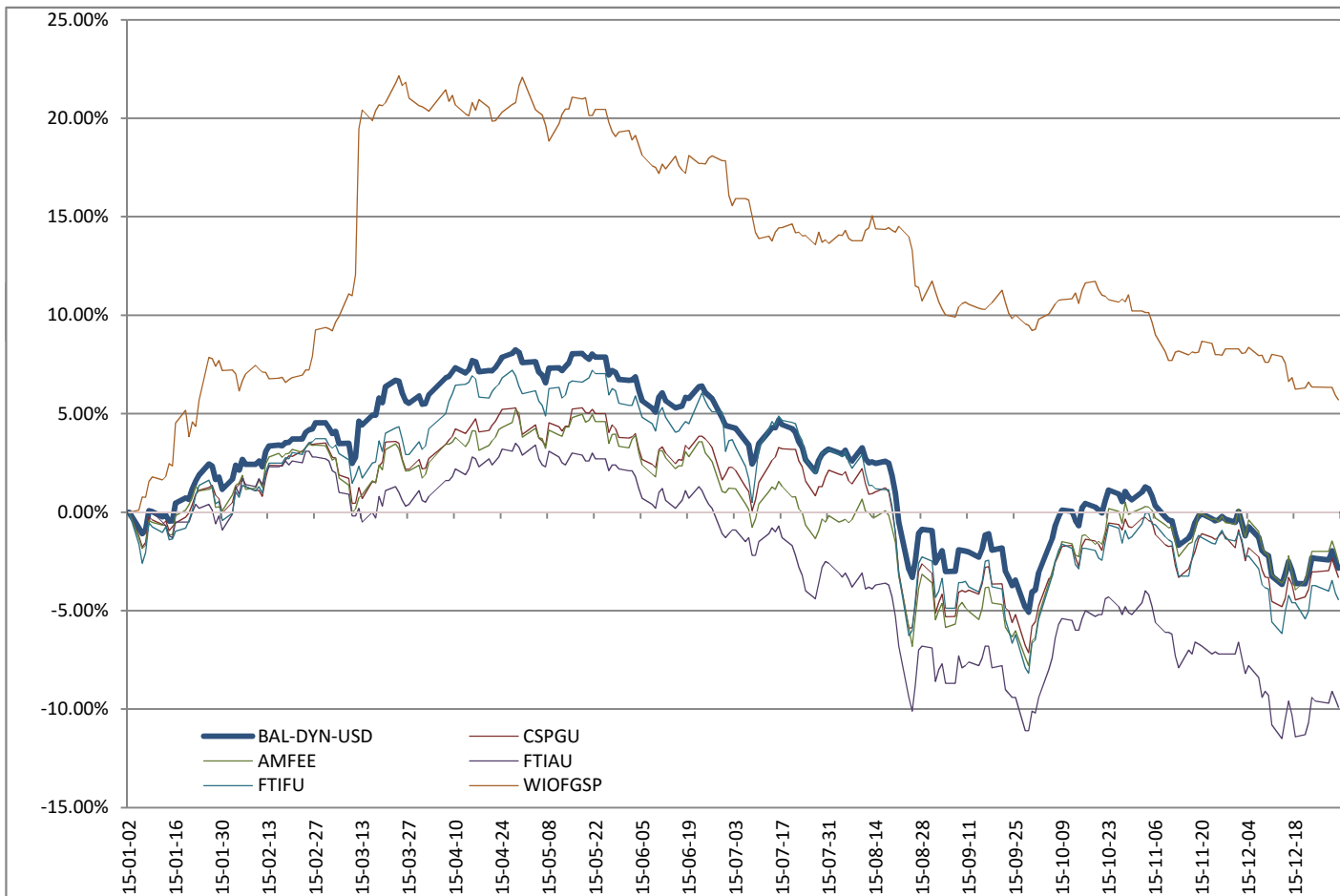
	R <sub>f</sub> (p.a.)	R <sub>m</sub> (p.a.)
SML + 1.64σ <sub>(R<sub>m</sub>)</sub>	3.8621%	3.86%
SML + σ <sub>(R<sub>m</sub>)</sub>	2.4117%	2.41%
SML - σ <sub>(R<sub>m</sub>)</sub>	-2.1209%	-2.12%
SML - 1.64σ <sub>(R<sub>m</sub>)</sub>	-3.5713%	-3.58%

Rating Category	Balanced - dynamic - USD					
Ccy	USD					
Average Daily R <sub>f</sub> O/N (p.a.)	0.1342%	CS PF (Lux) Growth (US\$) B	First Eagle Amundi Internation Fund - AU	Franklin Templeton - Franklin Income Fund A(acc)USD	Franklin Templeton - Templeton Global Income Fund A(acc)USD	WIOF Global Strategy Alpha Portfolio - Class A
Correlation	1.00	0.94	0.93	0.91	0.91	0.31
Beta	1.00	1.13	1.14	1.10	1.25	0.37
Average Daily Return (p.a.)	-3.60%	-4.06%	-2.90%	-13.27%	-5.46%	8.99%
Jensen's Alpha (p.a.)		0.04%	1.23%	-9.31%	-0.92%	10.26%
Ranking (rank / number)		3/5	2/5	5/5	4/5	1/5

EIC Fund Ratings ©



Fund	BAL-DYN-USD	CSPGU	AMFEE	FTIAU	FTIFU	WIOFGSP
ISIN	Market	LU0078042453	LU0068578508	LU1162221912	LU0211326755	LU0232043801



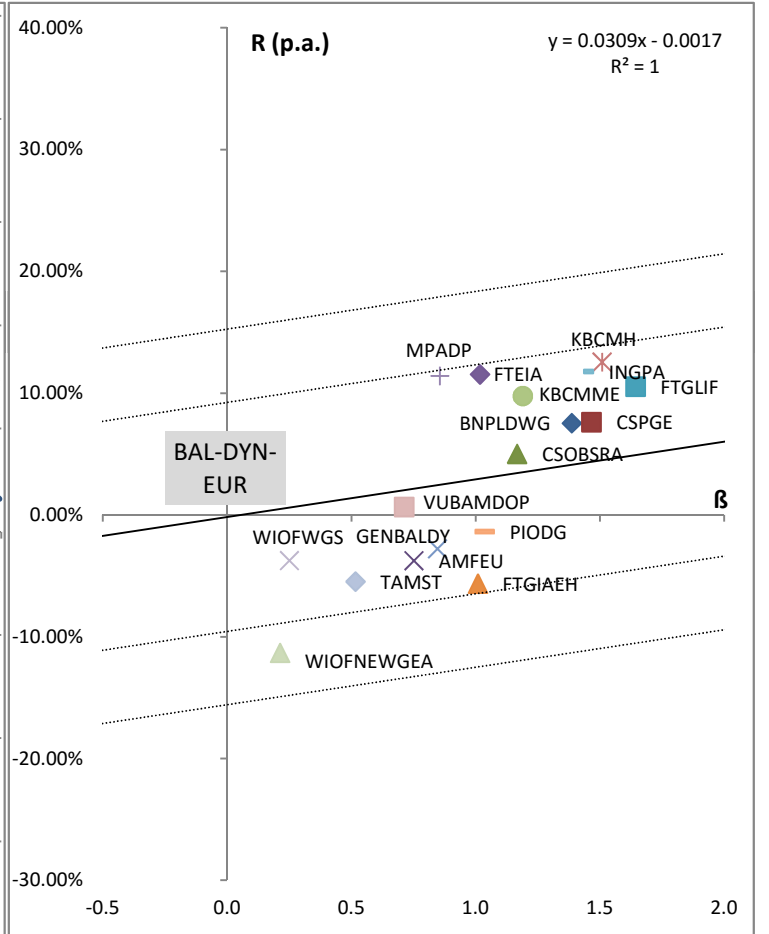
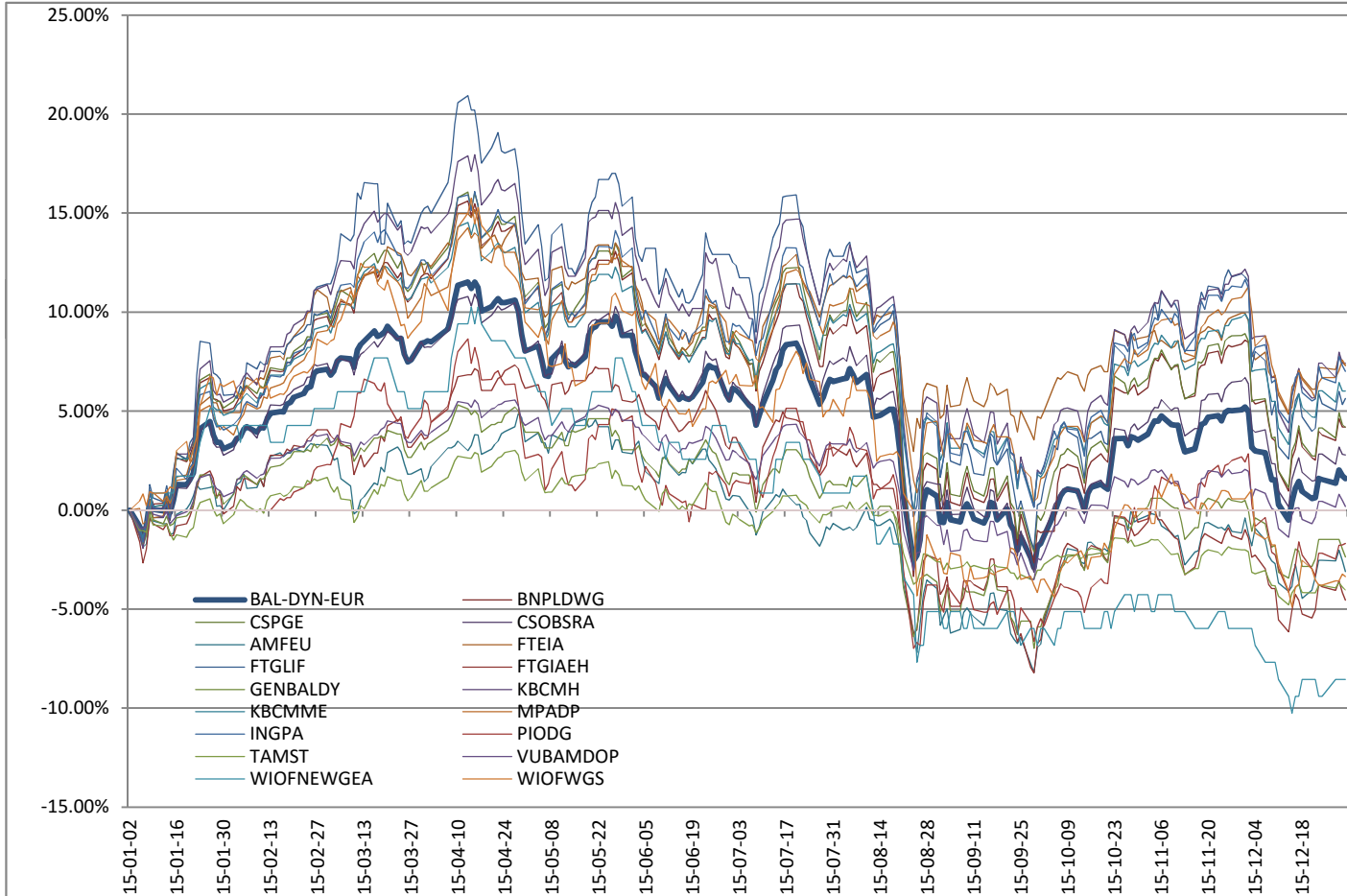
	R <sub>f</sub> (p.a.)	R <sub>m</sub> (p.a.)
SML + 1.64σ <sub>(R<sub>m</sub>)</sub>	13.3567%	9.62%
SML + σ <sub>(R<sub>m</sub>)</sub>	8.1967%	4.46%
SML - σ <sub>(R<sub>m</sub>)</sub>	-7.9283%	-11.66%
SML - 1.64σ <sub>(R<sub>m</sub>)</sub>	-13.0883%	-16.84%

Rating Category	Balanced - dynamic - EUR										
Ccy	EUR										
Average Daily R <sub>f</sub> O/N (p.a.)	-0.1677%	BNP Paribas L1 Diversified World Growth	CS PF (Lux) Growth (EURO) B	ČSOB Rastový	First Eagle Amundi Internation Fund - AHE	Franklin Templeton - Franklin European Income Fund A(acc)EUR	Franklin Templeton - Templeton Global Income Fund A(acc)EUR	Franklin Templeton - Templeton Global Income Fund A(acc)EUR	Franklin Templeton - Templeton Global Income Fund A(acc)EUR	Generali CEE Dynamický balancovaný fond - EUR	KBC Master Fund High
Correlation	1.00	0.94	0.96	0.94	0.71	0.88	0.89	0.86	0.87	0.96	
Beta	1.00	1.39	1.47	1.17	0.75	1.02	1.64	1.01	0.85	1.51	
Average Daily Return (p.a.)	2.92%	7.54%	7.63%	5.03%	-3.75%	11.55%	10.54%	-5.64%	-2.77%	12.56%	
Jensen's Alpha (p.a.)		3.42%	3.27%	1.59%	-5.90%	8.57%	5.63%	-8.59%	-5.22%	8.06%	
Ranking (rank / number)		7/15	8/15	9/15	13/15	2/15	6/15	15/15	12/15	3/15	

EIC Fund Ratings ©



Fund	BAL-DYN-EUR	BNPLDWG	CSPGE	CSOBSRA	AMFEU	FTEIA	FTGLIF	FTGIAEH	GENBALDY	KBCMh
ISIN	Market	LU0132152439	LU0091101195	0	LU0433182416	LU1129997448	LU0211332563	LU1022656703	IE00BGLNMQ96	BE0149028368



	R <sub>f</sub> (p.a.)	R <sub>m</sub> (p.a.)
SML + 1.64σ <sub>(R<sub>m</sub>)</sub>	15.2517%	18.34%
SML + σ <sub>(R<sub>m</sub>)</sub>	9.2344%	12.33%
SML - σ <sub>(R<sub>m</sub>)</sub>	-9.5697%	-6.48%
SML - 1.64σ <sub>(R<sub>m</sub>)</sub>	-15.5871%	-12.51%

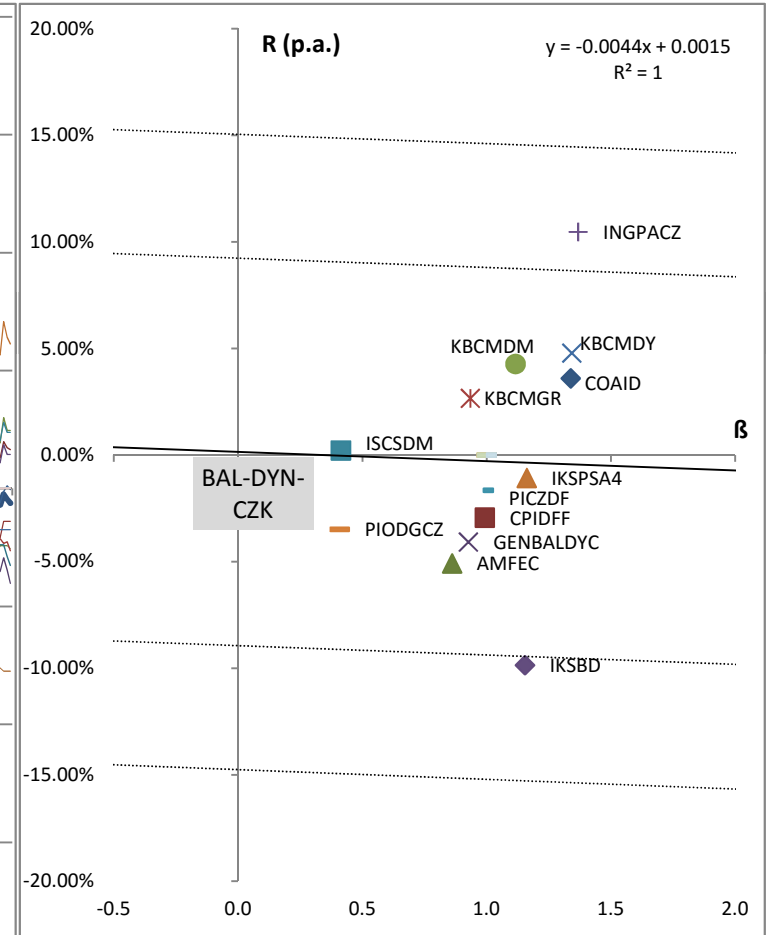
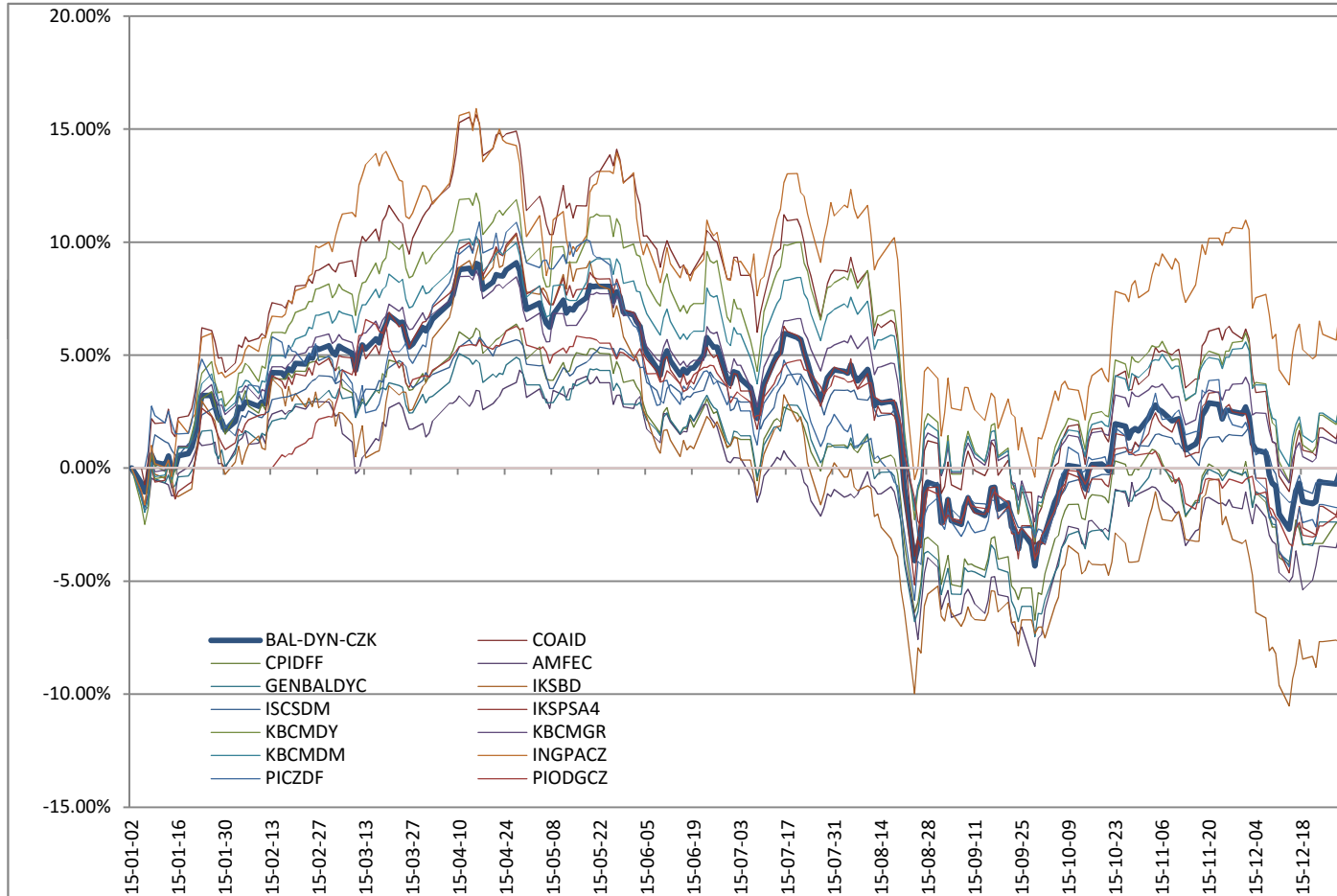
KBC Master Fund Medium	Moventum Plus Aktiv Dynamické portfolio	NN Patrimonial Aggressive EUR	Pioneer Fund Solutions - Diversified Growth	TAM StrategicFund	VUBAM Dynamické Portfólio	WPP New Global Equity Markets Risk 18% Portfolio - Class A	WSP Global Strategy Risk 10% Portfolio - Class A
0.96	0.80	0.95	0.80	0.79	0.88	0.19	0.19
1.19	0.86	1.44	1.04	0.52	0.71	0.21	0.25
9.77%	11.42%	11.79%	-1.36%	-5.47%	0.66%	-11.32%	-3.74%
<b>6.26%</b>	<b>8.94%</b>	<b>7.52%</b>	<b>-4.40%</b>	<b>-6.90%</b>	<b>-1.37%</b>	<b>NR</b>	<b>NR</b>
<b>5/15</b>	<b>1/15</b>	<b>4/15</b>	<b>11/15</b>	<b>14/15</b>	<b>10/15</b>	<b>NR</b>	<b>NR</b>
★★★★★☆☆	★★★★★☆☆	★★★★★☆☆	★★★★★☆☆	★★★★★☆☆	★★★★★☆☆	NR	NR
<b>KBCMME</b>	<b>MPADP</b>	<b>INGPA</b>	<b>PIODG</b>	<b>TAMST</b>	<b>VUBAMDOP</b>	<b>WIOFNEWGEA</b>	<b>WIOFWGS</b>
BE0145346400	LU0326465068	LU0121216526	LU1121647157	TAMSTRA	DOP	LU0481241353	LU0481329281

Rating Category	Balanced - dynamic - CZK										
Ccy	CZK										
Average Daily R <sub>r</sub> O/N (p.a.)	0.1454%	Conseq Active Invest Dynamický	Generali Dynamický fond	First Eagle Amundi Internation Fund - AHK	Generali CEE Dynamický balancovaný fond - CZK	IKS BALANCOVANÝ DYNAMICKÝ	ISČS DYNAMICKÝ MIX FF	KB PRIVÁTNÍ SPRÁVA AKTIV 4	KBC Master Fund CSOB Dynamic	KBC Master Fund CSOB Growth	
Correlation	1.00	0.94	0.91	0.81	0.92	0.83	0.58	0.92	0.94	0.94	
Beta	1.00	1.34	0.99	0.86	0.93	1.15	0.41	1.16	1.34	0.93	
Average Daily Return (p.a.)	-0.29%	3.60%	-2.94%	-5.08%	-4.07%	-9.86%	0.22%	-1.07%	4.79%	2.67%	
Jensen's Alpha (p.a.)		4.04%	-2.65%	-4.85%	-3.82%	-9.50%	0.25%	-0.71%	5.23%	2.93%	
Ranking (rank / number)		4/13	9/13	12/13	11/13	13/13	6/13	7/13	2/13	5/13	

EIC Fund Ratings ©



Fund	BAL-DYN-CZK	COAID	CPIDFF	AMFEC	GENBALDYC	IKSBD	ISCS DM	IKSPSA4	KBCMDY	KBCMGR
ISIN		CZ0008474202	CZ0008473303	LU1095742109	IE00BGLNMR04	CZ0008471968	CZ0008472347	CZ0008473162	BE0174397886	BE0174398892
Market										



	R <sub>r</sub> (p.a.)	R <sub>m</sub> (p.a.)
SML + 1.64σ <sub>(R<sub>m</sub>)</sub>	15.0527%	14.62%
SML + σ <sub>(R<sub>m</sub>)</sub>	9.2352%	8.80%
SML - σ <sub>(R<sub>m</sub>)</sub>	-8.9444%	-9.38%
SML - 1.64σ <sub>(R<sub>m</sub>)</sub>	-14.7618%	-15.22%

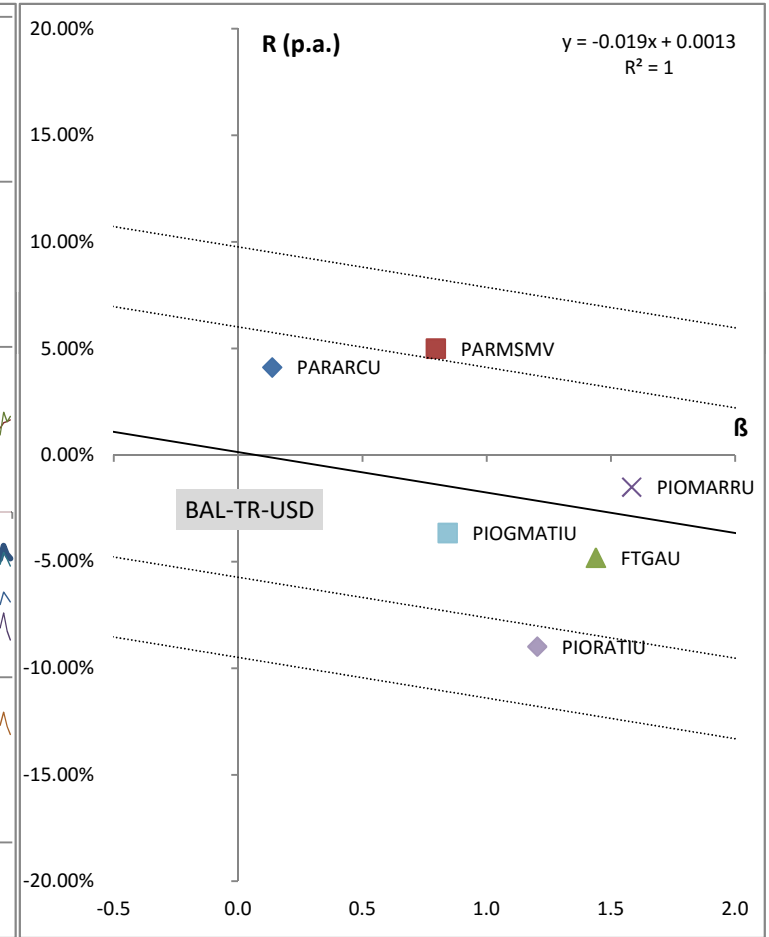
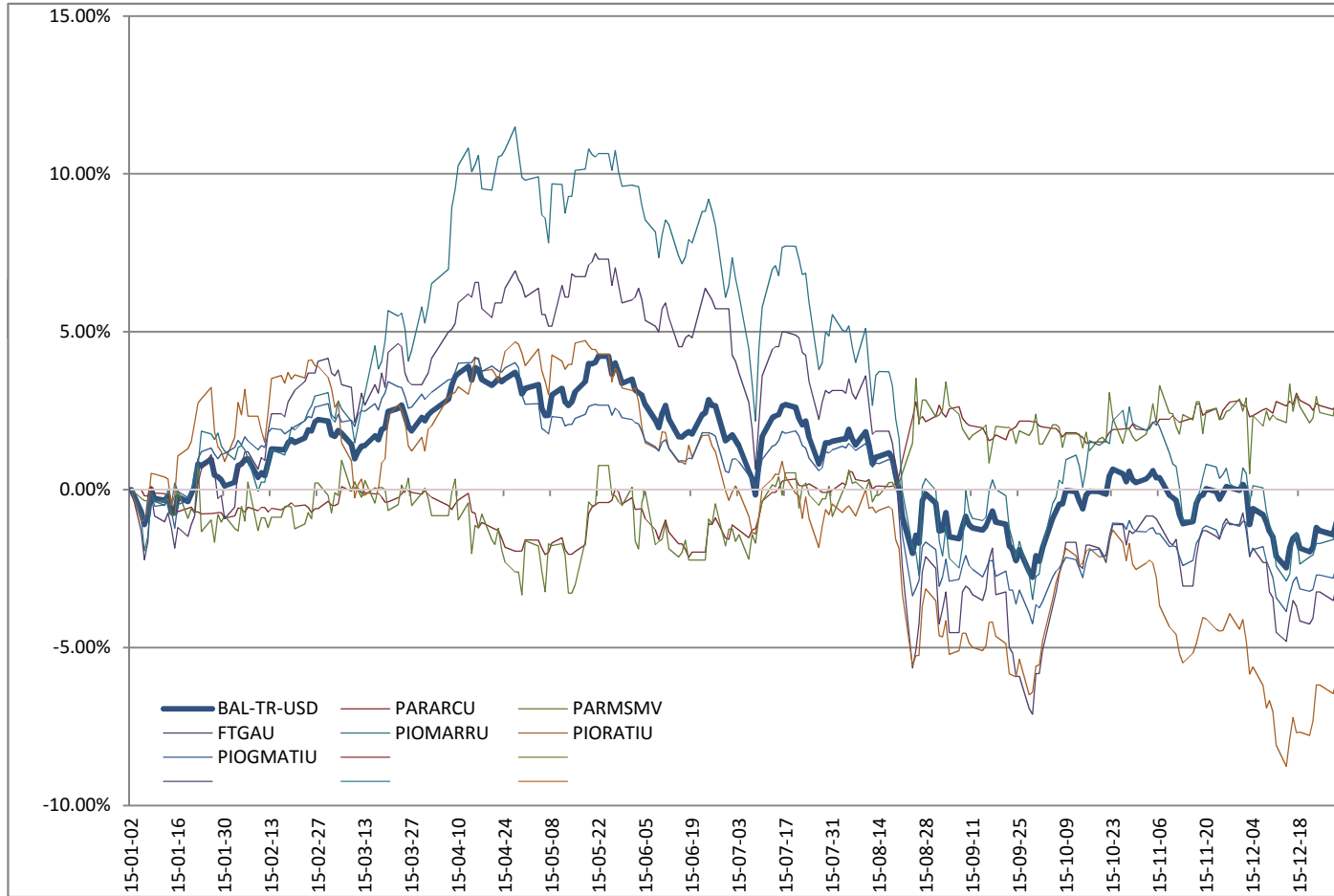
KBC Master Fund Dynamic Mixed Fund	NN Patrimonial Aggressive CZK	Pioneer - dynamický fond	Pioneer Fund Solutions - Diversified Growth CZK
0.95	0.87	0.82	0.59
1.12	1.37	0.99	0.41
4.28%	10.48%	-1.65%	-3.48%
<b>4.62%</b>	<b>10.93%</b>	<b>-1.36%</b>	<b>-3.45%</b>
<b>3/13</b>	<b>1/13</b>	<b>8/13</b>	<b>10/13</b>
★★★★☆	★★★★☆	★★★★☆	★★★★☆
<b>KBCMDM</b> BE0947166584	<b>INGPACZ</b> LU0405489047	<b>PICZDF</b> CZ0008471018	<b>PIODGCZ</b> LU1121647231

Rating Category	Balanced - Total return - USD							
Ccy	USD	BNP Parvest Absolute Return Multi Assets 4 (USD)	BNP PARVEST MULTI-STRATEGY MEDIUM VOL (USD)	Franklin Templeton - FRANKLIN TEMPLETON GLOBAL	Pioneer Funds - Multi Asset Real Return USD	Pioneer Funds - Real Assets Target Income USD	Pioneer Funds - Global Multi-Asset Target Income USD	
Average Daily R <sub>f</sub> O/N (p.a.)	0.1342%							
Correlation	1.00	0.22	0.44	0.84	0.85	0.80	0.88	
Beta	1.00	0.14	0.79	1.44	1.58	1.20	0.84	
Average Daily Return (p.a.)	-1.76%	4.12%	5.00%	-4.81%	-1.50%	-8.99%	-3.65%	
Jensen's Alpha (p.a.)		NR	6.37%	-2.22%	1.37%	-6.84%	-2.19%	
Ranking (rank / number)		NR	1/5	4/5	2/5	5/5	3/5	

EIC Fund Ratings ©

Fund	BAL-TR-USD	PARARCU	PARMSMV	FTGAU	PIOMARRU	PIORATIU	PIOGMATIU
ISIN	Market	LU0347703281	LU0347704099	LU0645133207	LU0701928961	LU0974969783	LU1088500860

NR ★★★★★★ ★★★★★★ ★★★★★★ ★★★★★★ ★★★★★★ ★★★★★★ ★★★★★★



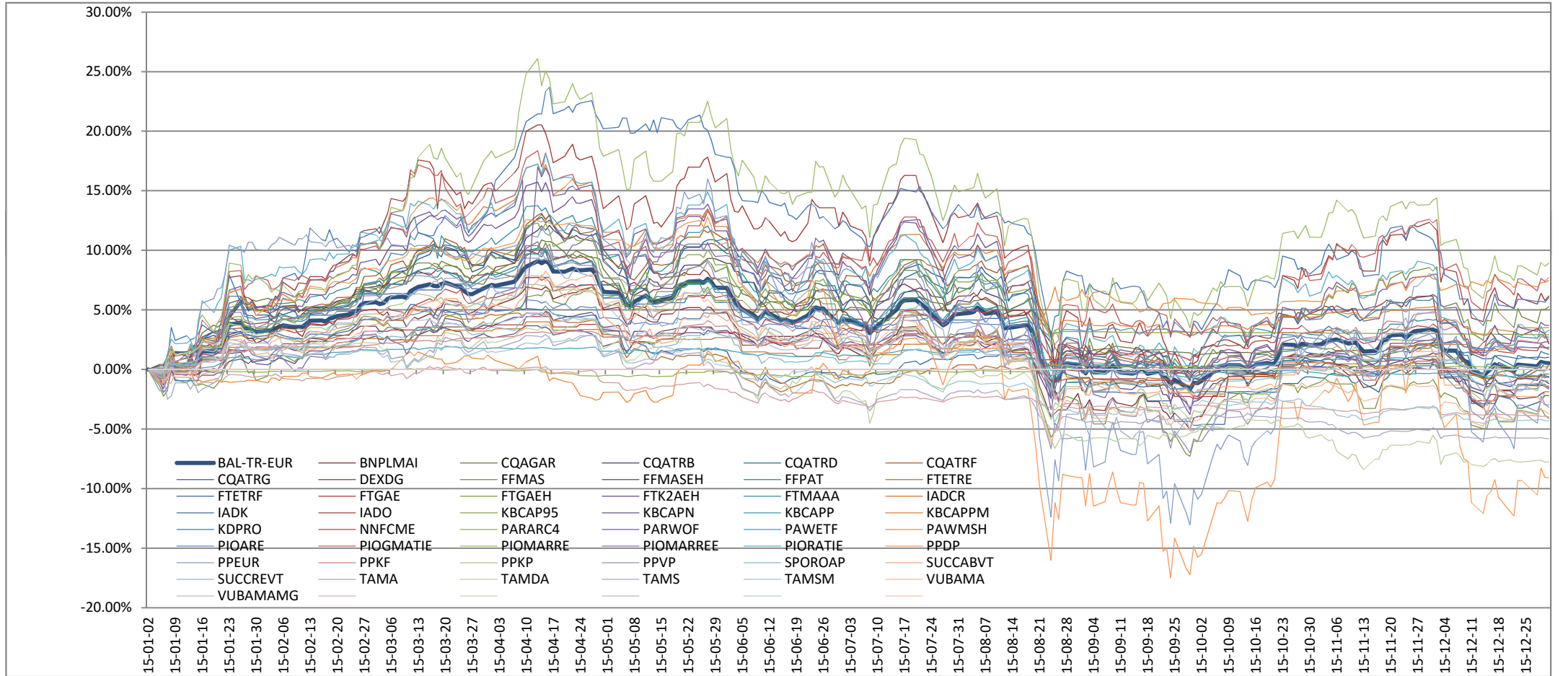
	R <sub>f</sub> (p.a.)	R <sub>m</sub> (p.a.)
SML + 1.64σ <sub>(R<sub>m</sub>)</sub>	9.7637%	7.87%
SML + σ <sub>(R<sub>m</sub>)</sub>	6.0058%	4.11%
SML - σ <sub>(R<sub>m</sub>)</sub>	-5.7375%	-7.63%
SML - 1.64σ <sub>(R<sub>m</sub>)</sub>	-9.4953%	-11.40%

Rating Category	Balanced - Total return - EUR											
Ccy	EUR											
Average Daily R <sub>r</sub> O/N (p.a.)	-0.1677%	BNP PARIBAS L1 MULTI-ASSET INCOME	C-QUADRAT ARTS Total Return Garant	C-QUADRAT ARTS Total Return Balanced VTA	C-QUADRAT ARTS Total Return Dynamic VTA	C-QUADRAT ARTS Total Return Flexible T	C-QUADRAT ARTS Total Return Global-AMI	Dexia Dynamix Global 93	Fidelity - Global Multi Asset Tactical Moderate Fund A-ACC-EUR	Fidelity - Global Multi Asset Tactical Moderate Fund A-ACC-EUR		
Correlation	1.00	0.81	0.25	0.30	0.35	0.36	0.35	0.16	0.85	0.79		
Beta	1.00	1.03	0.22	0.33	0.52	0.53	0.52	0.21	1.69	0.82		
Average Daily Return (p.a.)	1.02%	-1.28%	-0.35%	-2.36%	-2.55%	1.06%	1.33%	3.55%	8.73%	-0.69%		
Jensen's Alpha (p.a.)		<b>-2.34%</b>	<b>NR</b>	<b>NR</b>	<b>-3.00%</b>	<b>0.60%</b>	<b>0.89%</b>	<b>NR</b>	<b>6.89%</b>	<b>-1.49%</b>		
Ranking (rank / number)		<b>27/39</b>	<b>NR</b>	<b>NR</b>	<b>30/39</b>	<b>18/39</b>	<b>17/39</b>	<b>NR</b>	<b>5/39</b>	<b>25/39</b>		

EIC Fund Ratings ©

★★★★★ NR NR ★★★★★★★★★★ ★★★★★★★★★★ ★★★★★★★★★★ NR ★★★★★★★★★★ ★★★★★★★★★★

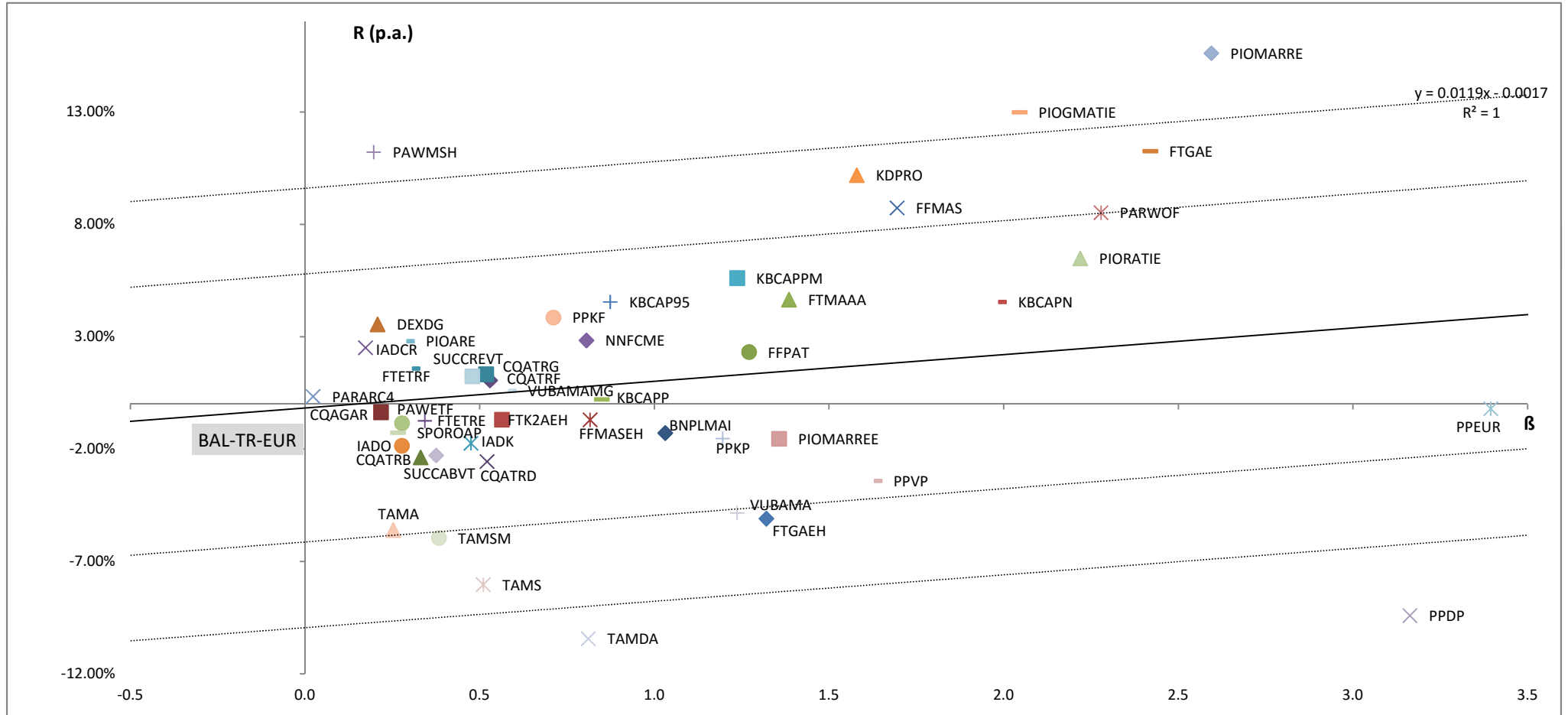
Fund	BAL-TR-EUR	BNPLMAI	CQAGAR	CQATRB	CQATRD	CQATRF	CQATRG	DEXDG	FFMAS	FFMASEH
ISIN	Market	LU1056594234	AT0000A03K55	AT0000A08EV6	AT0000A08EX2	DE000A0YJMN7	DE000A0F5G98	LU0191203339	LU0267387685	LU0365262384



	R <sub>r</sub> (p.a.)	R <sub>m</sub> (p.a.)
SML + 1.64σ <sub>(R<sub>m</sub>)</sub>	9.6084%	10.79%
SML + σ <sub>(R<sub>m</sub>)</sub>	5.7934%	6.98%
SML - σ <sub>(R<sub>m</sub>)</sub>	-6.1287%	-4.94%
SML - 1.64σ <sub>(R<sub>m</sub>)</sub>	-9.9438%	-8.77%



Fidelity - PATRIMOINE A-ACC-EURO	Franklin Templeton - Franklin European Total Return Fund	Franklin Templeton - Templeton European Total Return Fund	Franklin Templeton - FRANKLIN TEMPLETON GLOBAL	Franklin Templeton - FRANKLIN TEMPLETON GLOBAL	Franklin Templeton - Franklin K2 Alternative Strategies Fund	Franklin Templeton - Franklin Multi-Asset Income Fund A(acc)EUR	IAD CREO	IAD Kapital	IAD Optimal	KBC Archipel Portfolio Pro August 95
0.91	0.52	0.48	0.84	0.75	0.75	0.83	0.25	0.34	0.28	0.74
1.27	0.34	0.31	2.42	1.32	0.56	1.39	0.17	0.47	0.28	0.87
2.32%	-0.74%	1.59%	11.26%	-5.09%	-0.69%	4.65%	2.51%	-1.74%	-1.85%	4.55%
<b>0.98%</b>	<b>-0.97%</b>	<b>1.40%</b>	<b>8.56%</b>	<b>-6.49%</b>	<b>-1.19%</b>	<b>3.18%</b>	<b>NR</b>	<b>-2.13%</b>	<b>NR</b>	<b>3.68%</b>
<b>16/39</b>	<b>21/39</b>	<b>15/39</b>	<b>3/39</b>	<b>36/39</b>	<b>23/39</b>	<b>11/39</b>	<b>NR</b>	<b>26/39</b>	<b>NR</b>	<b>9/39</b>
★★★★★☆☆	★★★★☆☆☆	★★★★★☆☆	★★★★★☆☆	★★★★☆☆☆	★★★★☆☆☆	★★★★★☆☆	NR	★★★★☆☆☆	NR	★★★★★☆☆
<b>FFPAT</b>	<b>FTETRE</b>	<b>FTETRF</b>	<b>FTGAE</b>	<b>FTGAEH</b>	<b>FTK2AEH</b>	<b>FTMAAA</b>	<b>IADCR</b>	<b>IADK</b>	<b>IADO</b>	<b>KBCAP95</b>
LU0080749848	LU0170473531	LU0170473374	LU0645133629	LU0645133892	LU1093756242	LU0909060385	IADCR	IADK	IADO	IE00B3MRC924



KBC Archipel Portfolio Pro November	KBC Archipel Portfolio Pro February 95	KBC Archipel Portfolio Pro May 90	IAD KD Prosperita	NN First Class Multi Asset EUR	BNP Parvest Absolute Return Multi Assets 4	BNP PARWORLD WORLDSELECT ONE FIRST SELECTION EUR	BNP Parworld ETF Flexible Allocation	BNP PARWORLD MULTI-STRATEGY HIGH VOL	Pioneer Funds - Absolute Return Multi- Strategy EUR	Pioneer Funds - Global Multi-Asset Target Income EUR
0.94	0.83	0.86	0.69	0.83	0.15	0.66	0.70	0.17	0.47	0.83
1.99	0.85	1.24	1.58	0.81	0.02	2.28	0.28	0.20	0.29	2.05
4.56%	0.22%	5.61%	10.19%	2.84%	0.34%	8.52%	-0.84%	11.22%	2.80%	12.99%
<b>2.37%</b>	<b>-0.62%</b>	<b>4.31%</b>	<b>8.49%</b>	<b>2.05%</b>	<b>NR</b>	<b>5.99%</b>	<b>-1.00%</b>	<b>NR</b>	<b>2.63%</b>	<b>10.73%</b>
<b>13/39</b>	<b>20/39</b>	<b>7/39</b>	<b>4/39</b>	<b>14/39</b>	<b>NR</b>	<b>6/39</b>	<b>22/39</b>	<b>NR</b>	<b>12/39</b>	<b>2/39</b>
★★★★★☆☆	★★★★☆☆☆☆	★★★★★☆☆	★★★★★☆☆	★★★★★☆☆	NR	★★★★★☆☆	★★★★☆☆☆☆	NR	★★★★★☆☆	★★★★★☆☆
<b>KBCAPN</b>	<b>KBCAPP</b>	<b>KBCAPPM</b>	<b>KDPRO</b>	<b>NNFCME</b>	<b>PARARC4</b>	<b>PARWOF</b>	<b>PAWETF</b>	<b>PAWMSH</b>	<b>PIOARE</b>	<b>PIOGMATIE</b>
IE00B3ZKSQ75	IE00B4B0Q867	IE00B529VP14	KDPRO	LU0809674541	LU0347701749	LU0198587825	LU0218129350	LU0774752736	LU0363630707	LU0914277370

Pioneer Funds – Multi Asset Real Return EUR	Pioneer Funds – Multi Asset Real Return EUR Hedged	Pioneer Funds - Real Assets Target Income EUR	PRVA PENZIJNA Dynamické portfólio o.p.f.	PRVÁ PENZIJNÁ Eurofond o.p.f.	PRVA PENZIJNA KAPITÁLOVÝ FOND o.p.f.	PRVA PENZIJNA Konzervatívne portfólio o.p.f.	PRVÁ PENZIJNÁ Vyvážené portfólio o.p.f.	SPORO Aktívne portfólio	Success absolute VT	Success relative VT
0.87	0.74	0.88	0.82	0.81	0.82	0.90	0.89	0.38	0.29	0.22
2.59	1.36	2.22	3.16	3.39	0.71	1.20	1.63	0.27	0.38	0.48
15.61%	-1.54%	6.49%	-9.40%	-0.20%	3.86%	-1.53%	-3.41%	-1.26%	-2.28%	1.24%
<b>12.71%</b>	<b>-2.98%</b>	<b>4.03%</b>	<b>-12.98%</b>	<b>-4.05%</b>	<b>3.18%</b>	<b>-2.77%</b>	<b>-5.17%</b>	<b>-1.41%</b>	<b>NR</b>	<b>NR</b>
<b>1/39</b>	<b>29/39</b>	<b>8/39</b>	<b>39/39</b>	<b>31/39</b>	<b>10/39</b>	<b>28/39</b>	<b>32/39</b>	<b>24/39</b>	<b>NR</b>	<b>NR</b>
★★★★★★	★★★★☆☆	★★★★☆☆	★★★☆☆☆☆	★★★★☆☆	★★★★☆☆	★★★★☆☆	★★★★☆☆	★★★★☆☆	NR	NR
<b>PIOMARRE</b> LU0701928615	<b>PIOMARREE</b> LU0711166115	<b>PIORATIE</b> LU0701927567	<b>PPDP</b> 0	<b>PPEUR</b> 0	<b>PPKF</b> 0	<b>PPKP</b> 0	<b>PPVP</b> 0	<b>SPOROAP</b> SPOROAP	<b>SUCCABVT</b> AT0000A0K241	<b>SUCCREVT</b> AT0000A0K258

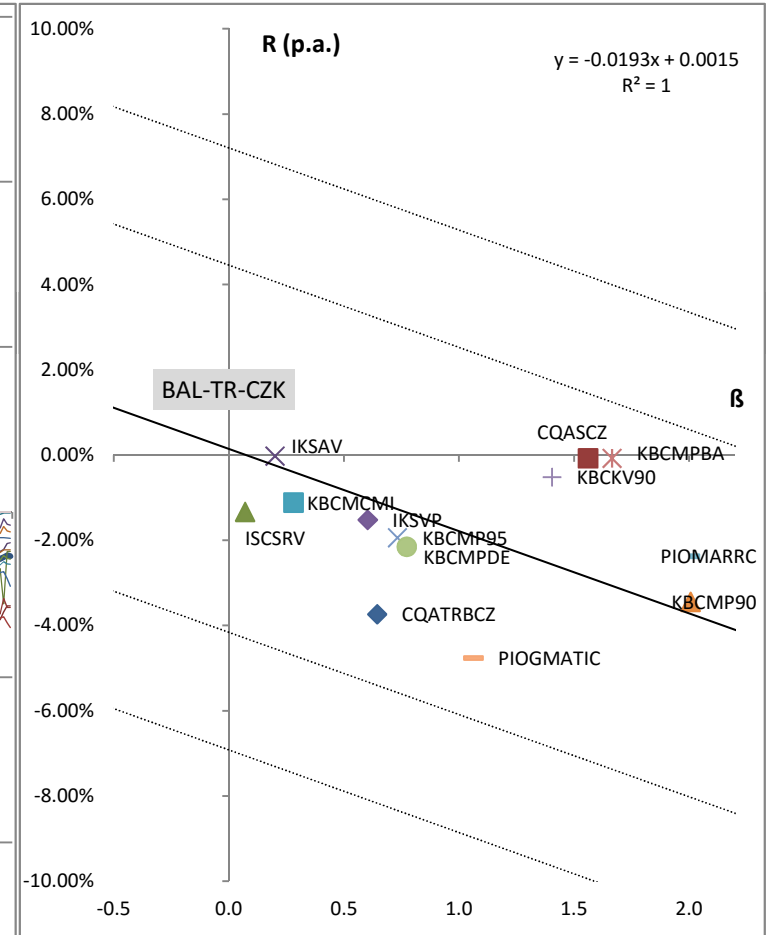
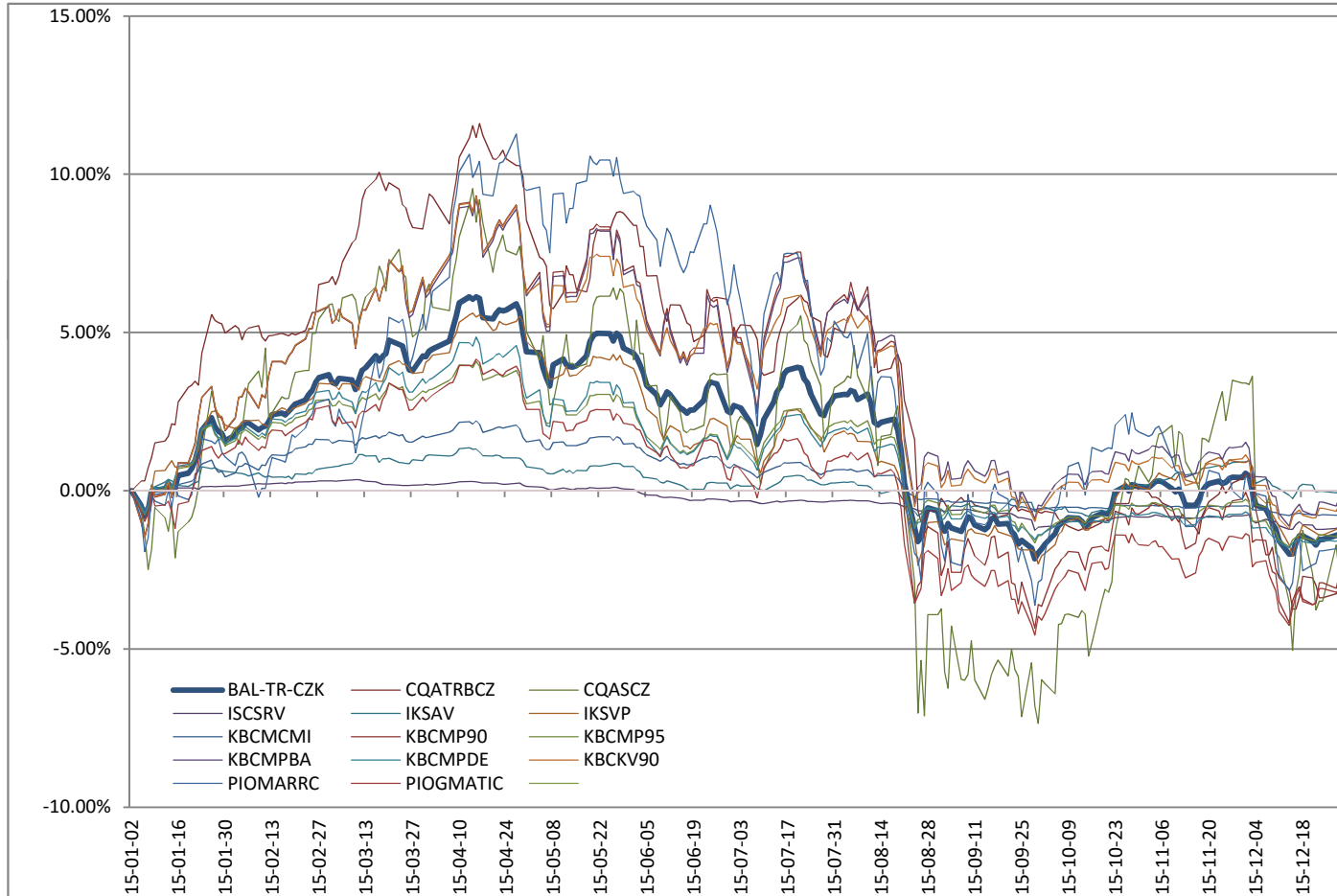
TAM Alfa fond	TAM DynamicAlpha Fund	TAM Saving Fund	TAM Smart Fund	VUBAM Active Magnifica	VUBAM Flexible Magnifica Fund
0.53	0.55	0.56	0.50	0.88	0.90
0.25	0.81	0.51	0.38	1.24	0.58
-5.59%	-10.43%	-8.03%	-5.95%	-4.83%	0.60%
<b>-5.72%</b>	<b>-11.22%</b>	<b>-8.46%</b>	<b>-6.23%</b>	<b>-6.13%</b>	<b>0.07%</b>
<b>33/39</b>	<b>38/39</b>	<b>37/39</b>	<b>35/39</b>	<b>34/39</b>	<b>19/39</b>
★★★★☆☆	★☆☆☆☆	★★★★☆☆	★★★★☆☆	★★★★☆☆	★★★★☆☆
<b>TAMA</b> TAMALFA	<b>TAMDA</b> TAMDYNA	<b>TAMS</b> TAMSPOR	<b>TAMSM</b> TAMSMAR	<b>VUBAMA</b> AMG	<b>VUBAMAMG</b> FMG

Rating Category	Balanced - Total return - CZK											
Ccy	CZK	C-QUADRAT ARTS			ISČS ŘÍZENÝCH		KB ABSOLUTNÍCH		KBC Master fund CSOB		KBC Master Fund CSOB	
Average Daily R <sub>f</sub> O/N (p.a.)	0.1454%	Total Return	Balanced	C-QUADRAT Strategie	AMI CZK	VÝNOSŮ	VÝNOSŮ	KB VYVÁŽENÝ PROFIL	Multi Invest	Portfolio Pro listopad 90	Portfolio Pro únor 95	Private Portfolio
Correlation			CZK									Balanced Pro
Beta	1.00	1.00	0.42	0.44	0.44	0.44	0.53	0.66	0.79	0.88	0.88	0.87
Average Daily Return (p.a.)	-1.78%	-1.78%	-3.73%	-0.07%	-1.33%	-1.33%	-0.02%	-1.52%	-1.11%	-3.44%	-1.94%	-0.07%
Jensen's Alpha (p.a.)		-2.64%	2.79%	-1.34%	0.22%	-0.50%	-0.72%	0.28%	-0.67%	2.99%		
Ranking (rank / number)		12/13	2/13	11/13	6/13	7/13	9/13	5/13	8/13	1/13		

### EIC Fund Ratings



Fund	BAL-TR-CZK	CQATRBZ	CQASCZ	ISCSRV	IKSAV	IKSVP	KBCMCMI	KBCMP90	KBCMP95	KBCMPBA
ISIN	Market	AT000A139C4	DE000A1C4DQ3	CZ0008472255	CZ0008473543	CZ0008472149	BE6210265342	BE6201770755	BE6209681327	BE0947168606



	R <sub>f</sub> (p.a.)	R <sub>m</sub> (p.a.)
SML + 1.64σ <sub>(R<sub>m</sub>)</sub>	7.2074%	5.28%
SML + σ <sub>(R<sub>m</sub>)</sub>	4.4515%	2.52%
SML - σ <sub>(R<sub>m</sub>)</sub>	-4.1607%	-6.09%
SML - 1.64σ <sub>(R<sub>m</sub>)</sub>	-6.9165%	-8.85%

KBC Master Fund CSOB	KBC Master fund ČSOB	Pioneer Funds – Multi	Pioneer Funds - Global
Private Portfolio	Portfolio Pro květen 90	Asset Real Return CZK	Multi-Asset Target
Defensive Pro			Income CZK
0.87	0.88	0.79	0.82
0.77	1.40	2.00	1.06
-2.15%	-0.52%	-2.37%	-4.76%
<b>-0.81%</b>	<b>2.05%</b>	<b>1.35%</b>	<b>-2.86%</b>
<b>10/13</b>	<b>3/13</b>	<b>4/13</b>	<b>13/13</b>



**KBCMPDE**

**KBCKV90**

**PIOMARRC**

**PIOGMATIC**

BE0947167590

BE6216639060

LU0949831423

LU1100112538